

**PNEUMATIC, HYDRAULIC, HIGH PRESSURE
HYDRAULIC & GENERAL PURPOSE COUPLINGS**

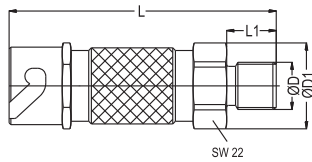
PNEUMATIK, MITTELDRUCK-HYDRAULIK,
HOCHDRUCK-HYDRAULIK UND FLÜSSIGKEITEN.

SERIE 220



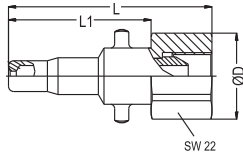
**Couplers and Plugs
Kupplungen und Nippel**

Connection Anschlüsse	Order No Bestellnr.	SW	Lenght Länge	ØD
--------------------------	------------------------	----	-----------------	----



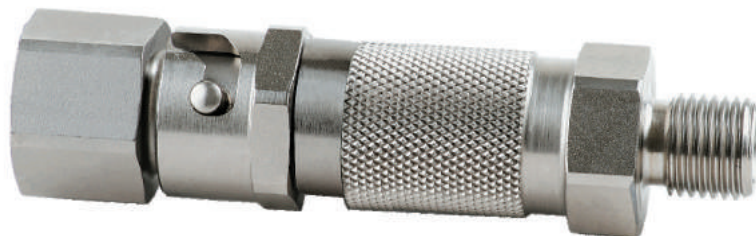
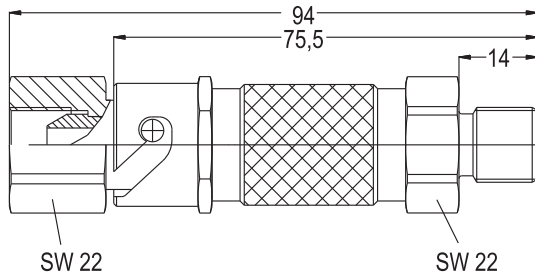
Male Threaded Coupler With 60°
Sealing Cone (DIN 7631)
Kupplung mit Aussengewinde
(60° - DIN 7631)

BSP 3/8"	220 EG 17-60	22	75	24,5
UNF 17/32"-18	220 JG 13-60	22	75	24,5



Female Threaded Plug With 60°
Sealing Cone
Innengewinde mit 60° Dichtkegel

BSP 3/8"	220 DU 17-60	22	57,5	24,3
UNF 17/32"-18	220 UU 13-60	22	57,5	24,3
UNF 9/16"-20	220 UU 14-60	22	57,5	24,5



Interchangeability - Kompatibilität
WALTHER 03 - 005

Temperature Range Temperaturbereich
-20°C +100°C (-4°F +212°F)

Working Pressure - Betriebsdruck
0 - 200 bar (0 - 2900 PSI)
Stainless Steel - Edelstahl
0 - 140 Bar (0 - 2030 PSI) Brass - Messing

Flow capacity - Größen
NW - 5 (20 mm²)

According to the using area :
Paint shop, syntetic resin,
solvent manufacturing and fumiture industry.

Anwendung :
Farben-, Lack-, Lackierereien- und
Automobilindustrie, Lösungsmittel verarbeitende
betriebe, Möbelindustrie, Maschinen- und
Apparatebau, Handwerk und
Reparaturwerkstätten.

Material - Material

Coupler body -
Kupplungsgrundkörper :AISI 303 Stainless Stee
AISI 303 Edelstahl

Back Part -
Rückwartiger :AISI 303 Stainless Stee
AISI 303 Edelstahl

Locking :Bayonet System

Valve - Ventil :Ball valve - Ventilkugel
Springs & Federn :Stainless Steel -
Edelstahl

Seals - Dichtungen :Polyamide
Plug - Nippel :AISI 303 Stainless Stee
AISI 303 Edelstahl

Option - Optionen (Material - Material)

Brass&Steel Chemical nickel plated
Messing & Stahl chemisch vernickelt