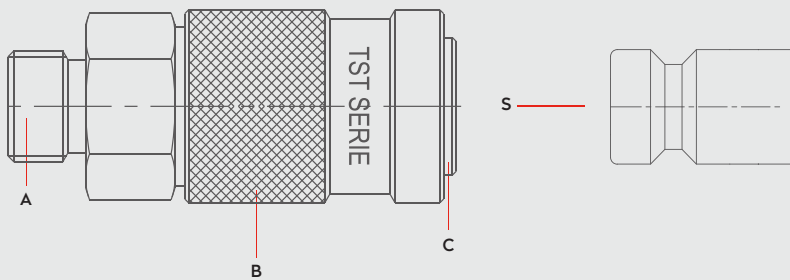




Materials



Material Code

A = Brass Nickel Plated

B = Steel Nickel Plated

C = Steel Zinc Plated

S = Steel Nickel Plated



0 - 50 bar
(0-725 PSI)



-20° to + 100°C (NBR)
-4° to + 212°F

Shut Off
Type



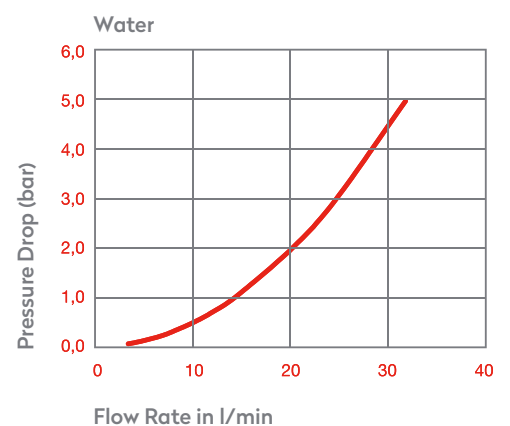
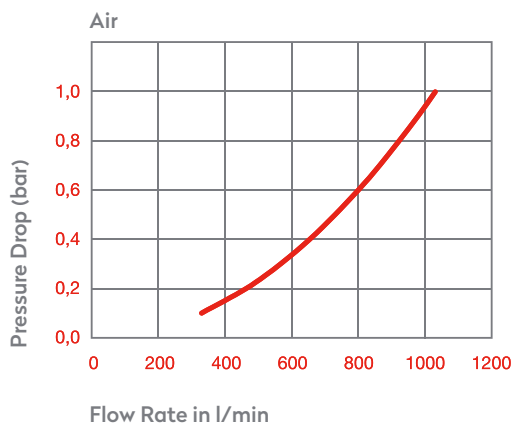
OM 262 - 01235
OM 100 - 01000
OM 250 - 00500

FLOW

660 lt/min

DN

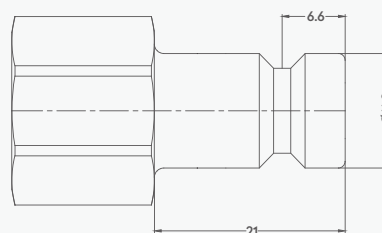
6 mm



Options

FPM

Plug Profile Serie 052B

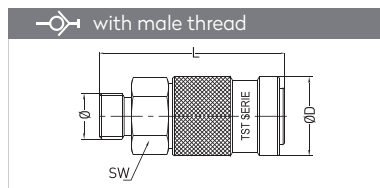


Compatible with

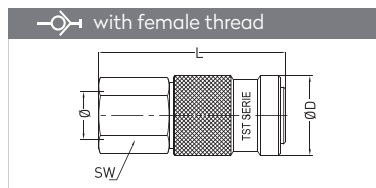
TST	205
PARKER - RECTUS	52KB
WALTHER	LP 006



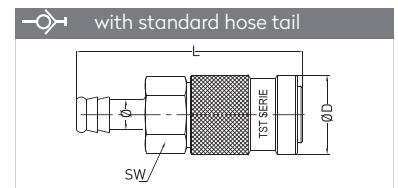
QUICK COUPLINGS SCHNELLKUPPLUNGEN



Connection	Part No.	SW	L	ØD
BSP 1/4"	052 EGB 13	21	63	25
BSP 3/8"	052 EGB 17	21	63	25
BSP 1/2"	052 EGB 21	22	66	25

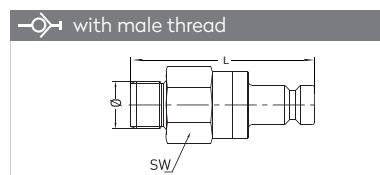


Connection	Part No.	SW	L	ØD
BSP 1/4"	052 DGB 13	21	61	25
BSP 3/8"	052 DGB 17	21	61	25
BSP 1/2"	052 DGB 21	24	63	25

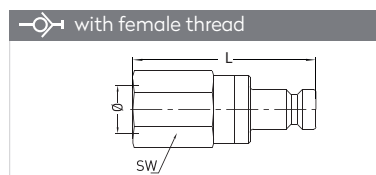


Connection	Part No.	SW	L	ØD
6 mm - 1/4"	052 HGB 06	21	77.2	25
9 mm - 5/14"	052 HGB 09	21	77.2	25
10 mm - 3/8"	052 HGB 10	21	77.2	25
11 mm - 7/16"	052 HGB 11	21	77.2	25
13 mm - 1/2"	052 HGB 13	21	77.2	25

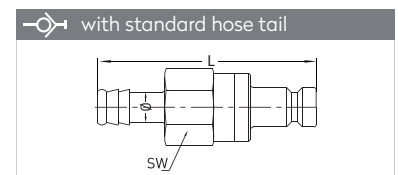
PLUGS STECKNIPPEL



Connection	Part No.	SW	L
BSP 1/8"	052 EUB 10	21	43
BSP 1/4"	052 EUB 13	21	44
BSP 3/8"	052 EUB 17	21	44
BSP 1/2"	052 EUB 21	21	47



Connection	Part No.	SW	L
BSP 1/8"	052 DUB 10	21	42
BSP 1/4"	052 DUB 13	21	44
BSP 3/8"	052 DUB 17	21	44
BSP 1/2"	052 DUB 21	24	47



Connection	Part No.	SW	L
6 mm - 1/4"	052 HUB 06	21	58
9 mm - 5/14"	052 HUB 09	21	58
10 mm - 3/8"	052 HUB 10	21	58
11 mm - 7/16"	052 HUB 11	21	58
13 mm - 1/2"	052 HUB 13	21	58