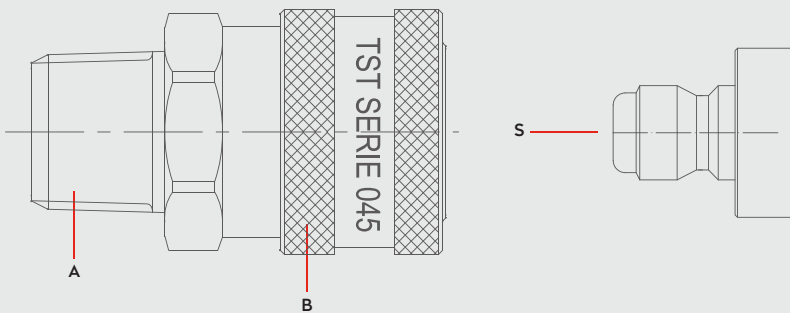


Materials




Material Code

A = Brass

B = Brass

S = Brass



BRASS : 0 - 305 bar
STEEL : 0 - 340 bar
STAINLESS : 0 - 440 bar



-20° to + 100°C (NBR)
-4° to + 212°F

Options

FPM **STEEL** **NICKEL**

AISI303 **AISI316**
Stainless Steel Stainless Steel

Compatible with

PARKER - RECTUS 45
PARKER ST

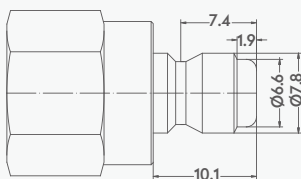
Shut Off Type



Plug Profile Serie 045

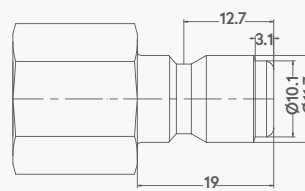
OM 178 - 00605

■045.03



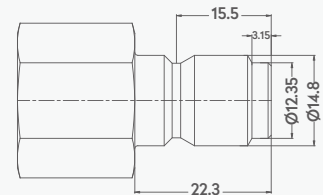
OM 262 - 00955

■045.06



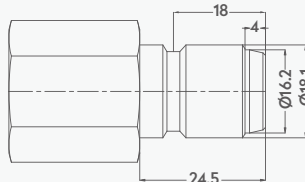
OM 262 - 01235

■045.10



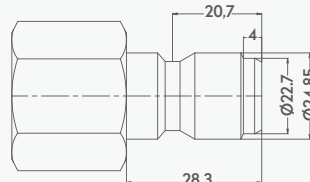
OM 280 - 01600

■045.13



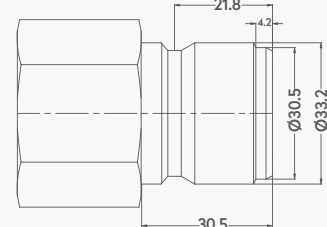
OM 353 - 02340

■045.19



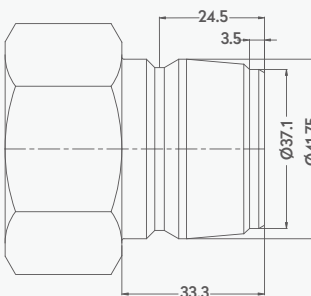
OM 300 - 03100

■045.25



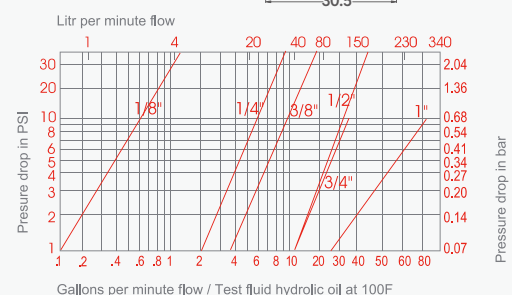
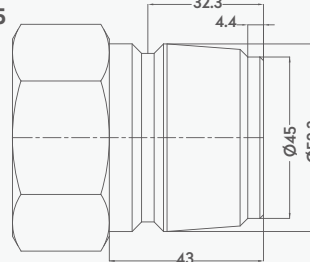
OM 353 - 03770

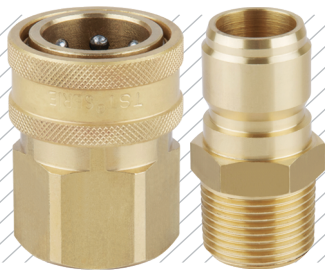
■045.32



OM 534 - 04380

■045.45

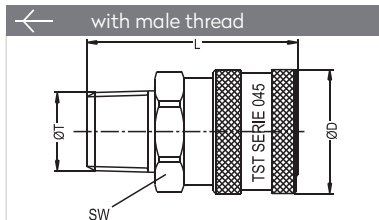




Truflate

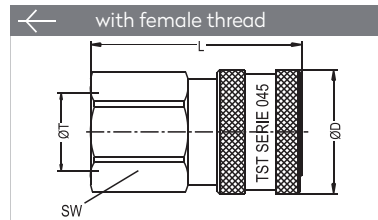
Straight Through

QUICK COUPLINGS SCHNELLKUPPLUNGEN



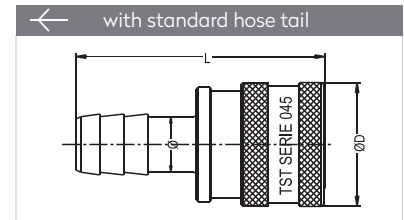
Connection	Part No.	SW	L	ØD
BSPT 1/8"	045.03 RGF 10	14	25	16
BSPT 1/4"	045.06 RGF 13	21	39.5	24
BSPT 3/8"	045.10 RGF 17	24	43	28
BSPT 1/2"	045.13 RGF 21	27	51	32
BSPT 3/4"	045.19 RGF 26	36	57	41
BSPT 1"	045.25 RGF 33	42	66.5	50
BSPT 1-1/4"	045.32 RGF 42	50	76	64
BSPT 1-1/2"	045.45 RGF 48	65	88	79

NPT 1/8"	045.03 TGF 10	14	26	16
NPT 1/4"	045.06 TGF 13	21	39.5	24
NPT 3/8"	045.10 TGF 17	24	43	28
NPT 1/2"	045.13 TGF 21	27	52	32
NPT 3/4"	045.19 TGF 26	36	58	41
NPT 1"	045.25 TGF 33	42	65.5	50
NPT 1-1/4"	045.32 TGF 42	50	85.5	64
NPT 1-1/2"	045.45 TGF 48	65	99	79



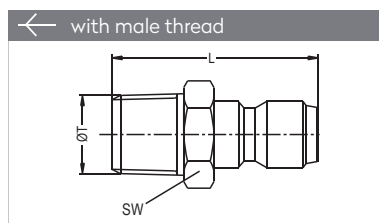
Connection	Part No.	SW	L	ØD
BSP 1/8"	045.03 DGF 10	14	25	16
BSP 1/4"	045.06 DGF 13	21	37	24
BSP 3/8"	045.10 DGF 17	24	40	28
BSP 1/2"	045.13 DGF 21	27	49.5	32
BSP 3/4"	045.19 DGF 26	36	53.3	41
BSPT 1"	045.25 DGF 33	42	60	50
BSPT 1-1/4"	045.32 DGF 42	50	62	64
BSPT 1-1/2"	045.45 DGF 48	74	65	79

NPT 1/8"	045.03 NGF 10	14	25	16
NPT 1/4"	045.06 NGF 13	21	37	24
NPT 3/8"	045.10 NGF 17	24	40	28
NPT 1/2"	045.13 NGF 21	27	49.5	32
NPT 3/4"	045.19 NGF 26	36	54.8	41
NPT 1"	045.25 NGF 33	42	60	50
NPT 1-1/4"	045.32 NGF 42	50	62	64
NPT 1-1/2"	045.45 NGF 48	79	65	79



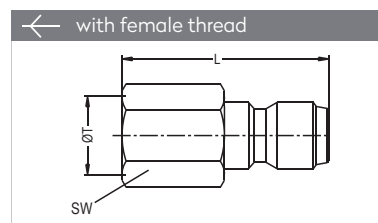
Connection	Part No.	L	ØD
Ø 3 mm - 1/8"	045.03 HGF 03	35	16
Ø 6 mm - 1/4"	045.06 HGF 06	52	24
Ø 10 mm - 3/8"	045.10 HGF 10	51	28
Ø 13 mm - 1/2"	045.13 HGF 13	55	32
Ø 19 mm - 3/4"	045.19 HGF 19	60	41
Ø 25 mm - 1"	045.25 HGF 25	82	50
Ø 32 mm - 1-1/4"	045.45 HGF 32	88	50
Ø 38 mm - 1-1/4"	045.45 HGF 38	103	79

PLUGS STECKNIPPEL



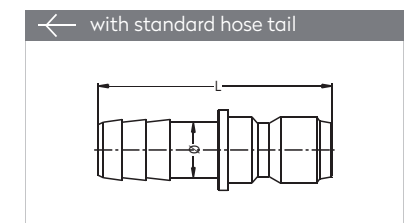
Connection	Part No.	SW	L
BSPT 1/8"	045.03 RU 10	12	27.9
BSPT 1/4"	045.06 RU 13	14	36.5
BSPT 3/8"	045.10 RU 17	19	41
BSPT 1/2"	045.13 RU 21	22	48.2
BSPT 3/4"	045.19 RU 26	27	56
BSPT 1"	045.25 RU 33	38	63.5
BSPT 1-1/4"	045.32 RU 42	45	69
BSPT 1-1/2"	045.45 RU 48	55	84

NPT 1/8"	045.03 TU 10	12	26.4
NPT 1/4"	045.06 TU 13	14	36.5
NPT 3/8"	045.10 TU 17	19	41.5
NPT 1/2"	045.13 TU 21	22	48.2
NPT 3/4"	045.19 TU 26	27	57
NPT 1"	045.25 TU 33	38	63.5
NPT 1-1/4"	045.32 TU 42	50	61
NPT 1-1/2"	045.45 TU 48	55	70



Connection	Part No.	SW	L
BSPT 1/8"	045.03 DU 10	14	24.4
BSPT 1/4"	045.06 DU 13	17	35.7
BSPT 3/8"	045.10 DU 17	22	41.5
BSPT 1/2"	045.13 DU 21	24	50
BSPT 3/4"	045.19 DU 26	30	49
BSPT 1"	045.25 DU 33	40	60
BSP 1-1/4"	045.32 DU 42	50	61
BSP 1-1/2"	045.45 DU 48	55	67

NPT 1/8"	045.03 NU 10	14	24.4
NPT 1/4"	045.06 NU 13	17	35.7
NPT 3/8"	045.10 NU 17	22	41.5
NPT 1/2"	045.13 NU 21	24	50
NPT 3/4"	045.19 NU 26	30	52
NPT 1"	045.25 NU 33	38	62.5
NPT 1-1/4"	045.32 NU 42	50	61
NPT 1-1/2"	045.45 NU 48	55	70



Connection	Part No.	Ø	L
Ø 3 mm - 1/8"	045.03 HU 03	3	32
Ø 6 mm - 1/4"	045.06 HU 06	6	48
Ø 10 mm - 3/8"	045.10 HU 10	10	51
Ø 13 mm - 1/2"	045.13 HU 13	13	53
Ø 19 mm - 3/4"	045.19 HU 19	19	58
Ø 25 mm - 1"	045.25 HU 25	25	83
Ø 32 mm - 1-1/4"	045.32 HU 32	45	81.2
Ø 38 mm - 1-1/2"	045.45 HU 38	55	99

Connection	Brass / Bar	Steel / Bar	Stainless / Bar
1/8"	170	170	285
1/4"	305	340	440
3/8"	185	240	340
1/2"	170	185	205
3/4"	135	185	205
1"	70	135	100