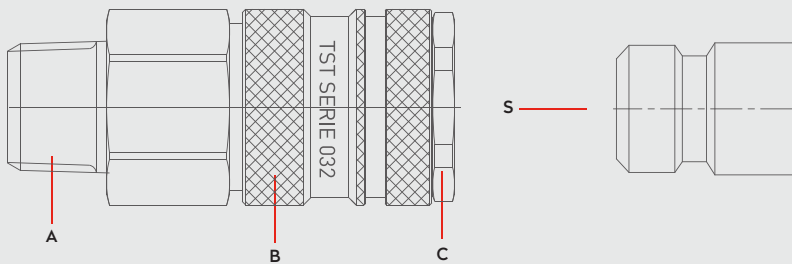




Materials



Material Code

- A = Brass Nickel Plated
- B = Brass Nickel Plated
- C = Brass Nickel Plated
- S = Steel Nickel Plated

0 - 35 bar
(0-508 PSI)

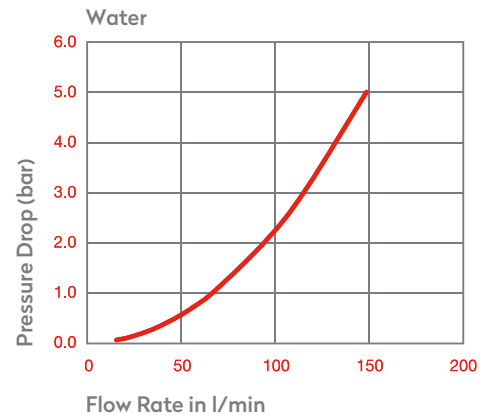
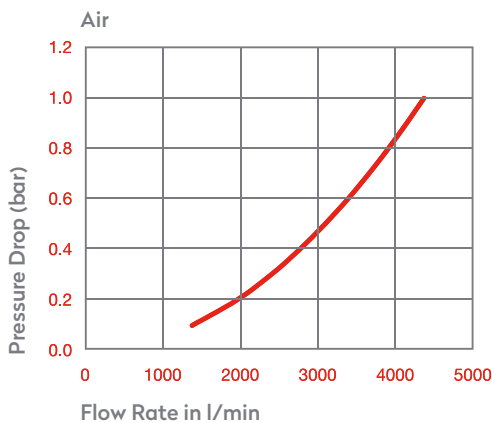
-20° to + 100°C (NBR)
-4° to + 212°F

Shut Off Type

OM 205 - 00870
032GC00-01M

FLOW 2300 lt/min

DN 10 mm



Options

FPM

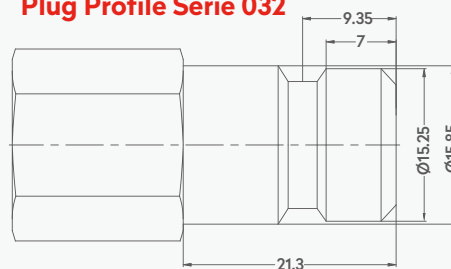
032B

AISI316
Stainless Steel

E1

E3

Plug Profile Serie 032



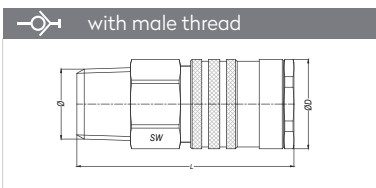
Compatible with

- PARKER - RECTUS 32KA
- TEMA 1800

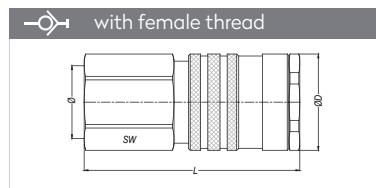
PNEUMATIC COUPLINGS
PNEUMATISCHE KUPPLUNGEN

SERIE 032

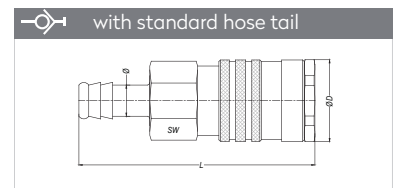
QUICK COUPLINGS SCHNELLKUPPLUNGEN



Connection	Part No.	SW	L	ØD
BSPT 1/4"	032 RG 13 - 01	22	72.4	27
BSPT 3/8"	032 RG 17 - 01	22	73.4	27
BSPT 1/2"	032 RG 21 - 01	25	61.4	27
BSPT 3/4"	032 RG 26 - 01	27	62.4	27

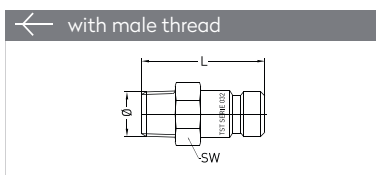


Connection	Part No.	SW	L	ØD
BSP 1/4"	032 DG 13 - 01	22	67.4	27
BSP 3/8"	032 DG 17 - 01	22	54.4	27
BSP 1/2"	032 DG 21 - 01	25	54.4	27

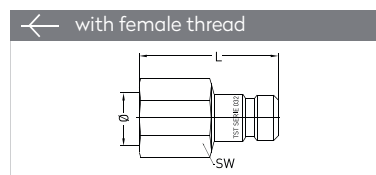


Connection	Part No.	SW	L	ØD
8 mm - 5/16"	032 HG 08 - 01	24	84.4	27
9 mm - 5/14"	032 HG 09 - 01	24	84.4	27
10 mm - 3/8"	032 HG 10 - 01	24	84.4	27
13 mm - 1/2"	032 HG 13 - 01	24	84.4	27
19 mm - 1/2"	032 HG 19 - 01	24	84.4	27

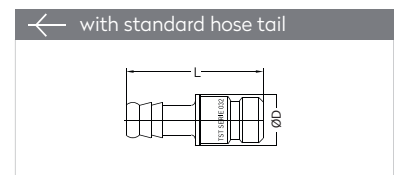
PLUGS STECKNIPPEL



Connection	Part No.	SW	L
BSPT 1/4"	032 RU 13	17	39
BSPT 3/8"	032 RU 17	17	39
BSPT 1/2"	032 RU 21	22	42
BSPT 3/4"	032 RU 26	27	44



Connection	Part No.	SW	L
BSP 1/4"	032 DU 13	17	36
BSP 3/8"	032 DU 17	19	36
BSP 1/2"	032 DU 21	25	40



Connection	Part No.	L	ØD
6 mm - 1/4"	032 HU 06	48	16
8 mm - 5/16"	032 HU 08	48	16
9 mm - 5/14"	032 HU 09	48	16
10 mm - 3/8"	032 HU 10	48	16
13 mm - 1/2"	032 HU 13	48	16
16 mm - 5/8"	032 HU 16	48	16
19 mm - 3/4"	032 HU 19	48	16