

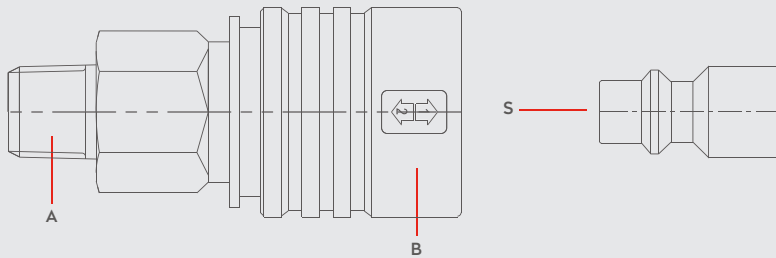


PNEUMATIC COUPLINGS  
PNEUMATISCHE KUPPLUNGEN

SERIE 023S DN 5.5



Materials



Material Code

A = Steel Zinc Plated

B = Plastic

S = Steel Nickel Plated

0 - 35 bar  
(0-508 PSI)

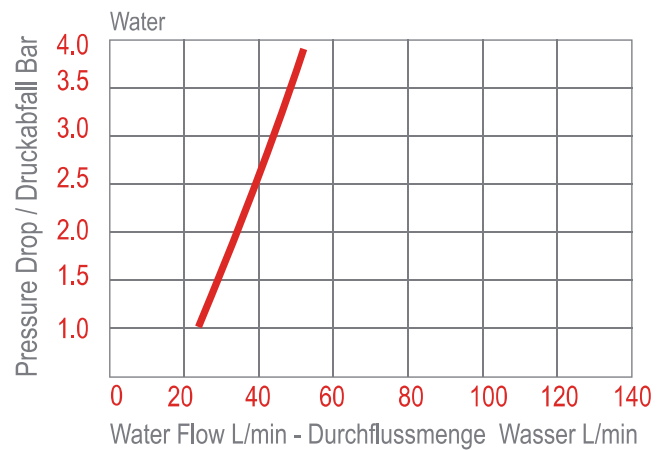
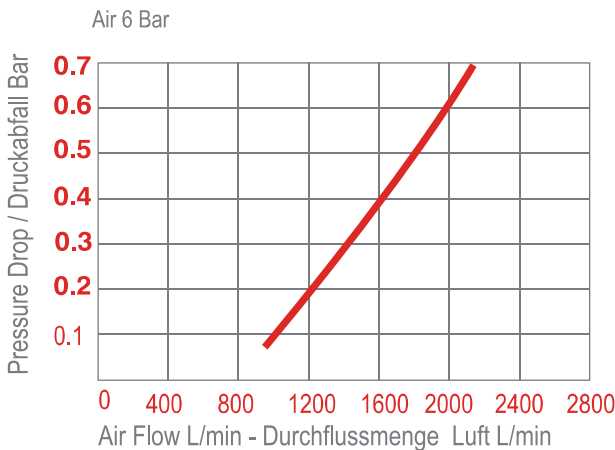
-20° to + 100°C (NBR)  
-4° to + 212°F

Shut Off Type

OM 200 - 00700  
OM 200 - 00900  
OM 100 - 01200  
OM 178 - 00765

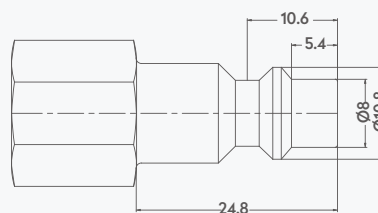
2 - STAGE  
ISO 4414

DN 5.5 mm



Options

Plug Profile Serie 023S



Compatible with

Industrial interchange	1/4"
TST	024
PARKER - RECTUS	23
CEJN	310
HANSEN	3000
PARKER	20
ATLAS COPCO QIC	08
US-MIL-SPEC-C-4109	



ISO 4414

ISO 6150 - B - 12

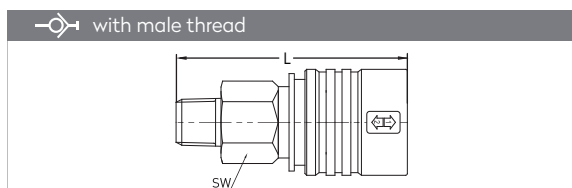
Industrial Interchange 1/4"

PNEUMATIC COUPLINGS  
PNEUMATISCHE KUPPLUNGEN

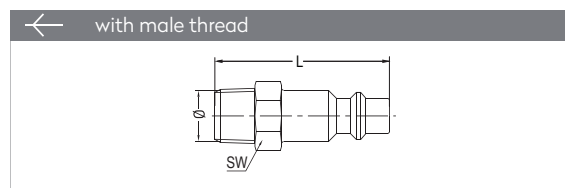
SERIE 023S

**QUICK COUPLINGS SCHNELLKUPPLUNGEN**

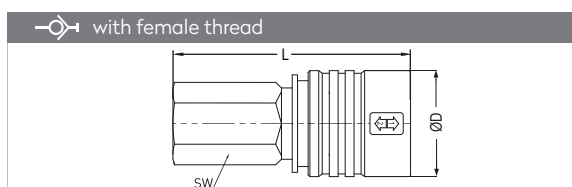
**PLUGS STECKNIPPEL**



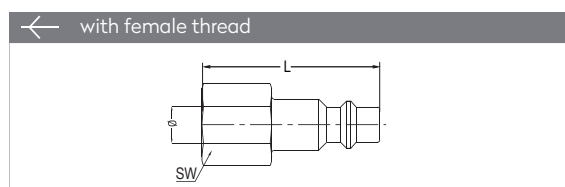
Connection	Part No.	SW	L	ØD
BSPT 1/4"	023 RGS 13	21	59.5	30
BSPT 3/8"	023 RGS 17	21	61	30
BSPT 1/2"	023 RGS 21	24	65	30
NPT 1/4"	023 TGS 13	21	59.5	30
NPT 3/8"	023 TGS 17	21	61	30
NPT 1/2"	023 TGS 21	24	65	30



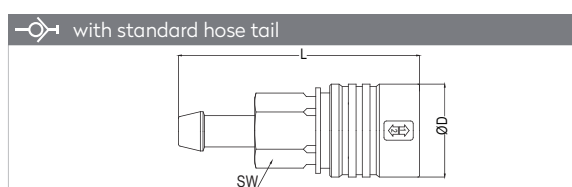
Connection	Part No.	SW	L
BSPT 1/8"	023 RU 10	13	40
BSPT 1/4"	023 RU 13	14	41.8
BSPT 3/8"	023 RU 17	17	41.8
BSPT 1/2"	023 RU 21	22	46
BSP 1/4"	023 EU 13	17	40
BSP 3/8"	023 EU 17	17	40



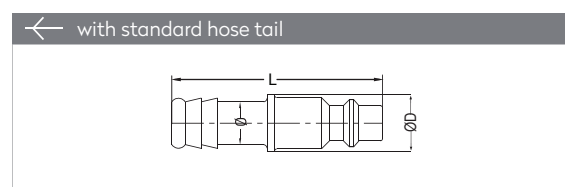
Connection	Part No.	SW	L	ØD
BSP 1/4"	023 DGS 13	21	60	30
BSP 3/8"	023 DGS 17	21	60	30
BSP 1/2"	023 DGS 21	24	62	30
NPT 1/4"	023 NGS 13	21	63	30
NPT 3/8"	023 NGS 17	21	64	30
NPT 1/2"	023 NGS 21	24	67	30



Connection	Part No.	SW	L
BSP 1/8"	023 DU 10	13	36
BSP 1/4"	023 DU 13	17	36
BSP 3/8"	023 DU 17	19	36
BSP 1/2"	023 DU 21	24	40



Connection	Part No.	SW	L	ØD
Ø 6 - 1/4"	023 HGS 06	21	72	30
Ø 8 - 5/16"	023 HGS 08	21	72	30
Ø 10 - 3/8"	023 HGS 10	21	72	30
Ø 13 - 1/2"	023 HGS 13	21	72	30



Connection	Part No.	L	ØD
Ø 6 mm	023 HU 06	50	12
Ø 8 mm	023 HU 08	50	12
Ø 9 mm	023 HU 09	50	12
Ø 10 mm	023 HU 10	50	12
Ø 13 mm	023 HU 13	50	14