

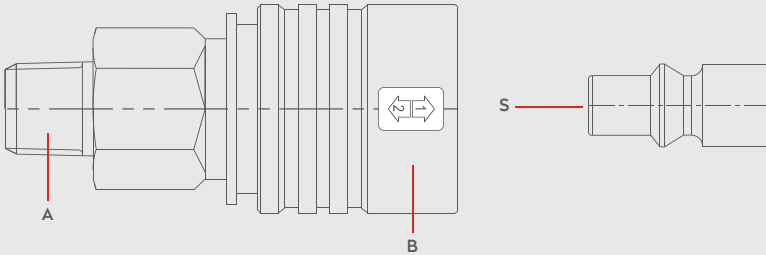


PNEUMATIC COUPLINGS
PNEUMATISCHE KUPPLUNGEN

SERIE **022S**



Materials



Material Code

A = Steel Zinc Plated

B = Plastic

S = Steel Zinc Plated

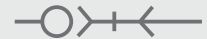


0 - 14 bar
(0-203 PSI)



-20° to + 100°C (NBR)
-4° to + 212°F

**Shut Off
Type**



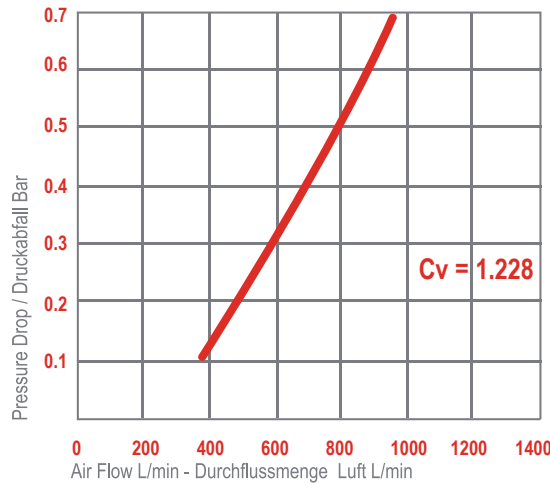
OM 200 - 00700
OM 200 - 00900
OM 100 - 001200
OM 178 - 00765

2 - STAGE

ISO 4414

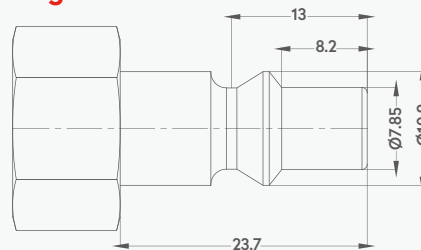
DN

5.5 mm



Options

Plug Profile Serie 022S



Compatible with

TST	014, 022
PARKER - RECTUS	14, 22
CEJN	300
ORION	44510
JWL	522, 532

ISO 4414

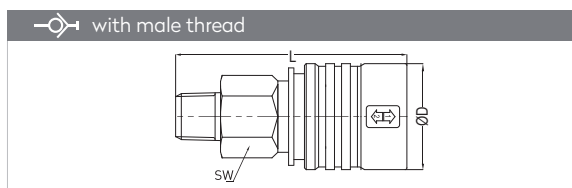
ARO 210

SERIE 022S

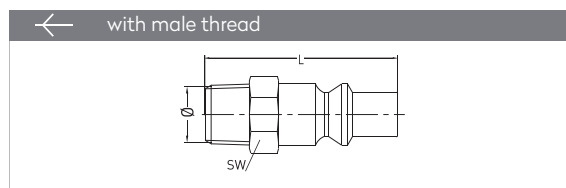


QUICK COUPLINGS SCHNELLKUPPLUNGEN

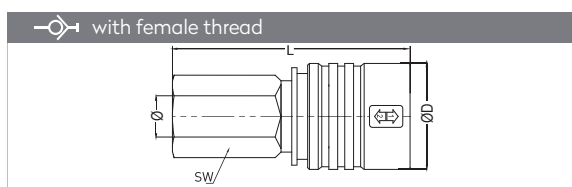
PLUGS STECKNIPPEL



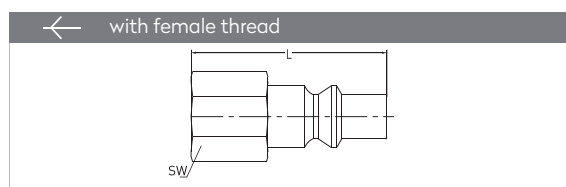
Connection	Part No.	SW	L	ØD
BSPT 1/4"	022 RGS 13	21	59,5	30
BSPT 3/8"	022 RGS 17	21	61	30
BSPT 1/2"	022 RGS 21	24	65	30
NPT 1/4"	022 TGS 13	21	59,5	30
NPT 3/8"	022 TGS 17	21	61	30
NPT 1/2"	022 TGS 21	24	65	30



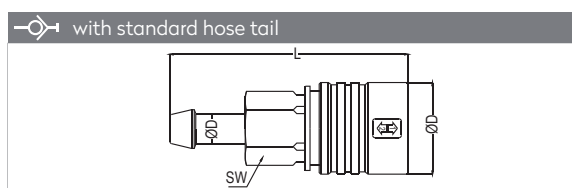
Connection	Part No.	SW	L
BSPT 1/8"	022 RU 10	12	40
BSPT 1/4"	022 RU 13	14	43
BSPT 3/8"	022 RU 17	17	43
BSPT 1/2"	022 RU 21	12	48



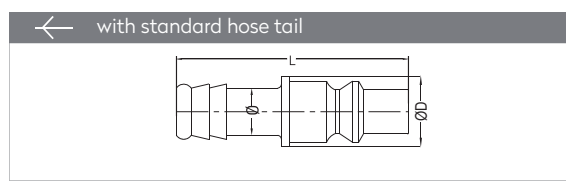
Connection	Part No.	SW	L	ØD
BSP 1/4"	022 DGS 13	21	60	30
BSP 3/8"	022 DGS 17	21	60	30
BSP 1/2"	022 DGS 21	24	62	30
NPT 1/4"	022 NGS 13	21	63	30
NPT 3/8"	022 NGS 17	21	64	30
NPT 1/2"	022 NGS 21	24	67	30



Connection	Part No.	SW	L
BSP 1/8"	022 DU 10	14	34
BSP 1/4"	022 DU 13	17	37
BSP 3/8"	022 DU 17	19	37
BSP 1/2"	022 DU 21	24	41



Connection	Part No.	SW	L	ØD
Ø 6 - 1/4"	022 HGS 06	21	72	30
Ø 8 - 5/16"	022 HGS 08	21	72	30
Ø 10 - 3/8"	022 HGS 10	21	72	30
Ø 13 - 1/2"	022 HGS 13	21	72	30



Connection	Part No.	L	ØD
6 mm - 1/4"	022 HU 06	48	12
8 mm - 5/16"	022 HU 08	48	12
10 mm - 3/8"	022 HU 10	48	12
13 mm - 1/2"	022 HU 13	48	15