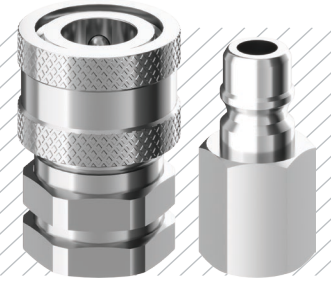


MULTI PURPOSE COUPLINGS

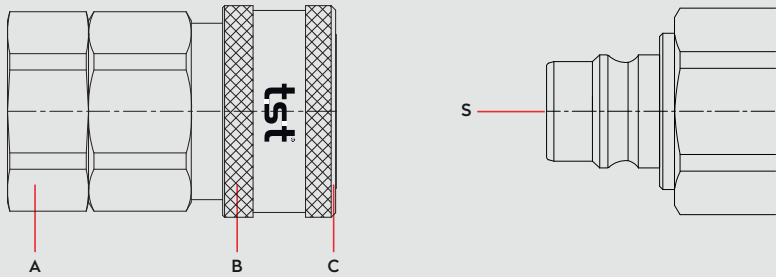
MEHRFACHE ANWENDUNGEN

SERIE 165

DN 6-51



Materials



Material Code

A = Brass

B = Brass

C = Brass

S = Brass



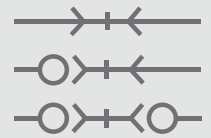
Shut-off Socket & Shut Off Plug / Shut-off Socket & Thru-Flow Plug



Thru-Flow Socket & Thru-Flow Plug

Body Size Größe	Steel Stahl	Brass Messing	Stainles Steel Edelstahl	Steel Stahl	Brass Messing	Stainles Steel Edelstahl
	Bar	Bar	Bar	Bar	Bar	Bar
1/4" - 6.5 mm	448	155	345	759	276	690
3/8" - 10 mm	310	155	276	759	276	552
1/2" - 13 mm	276	168	259	759	276	552
3/4" - 19 mm	241	138	138	621	241	483
1" - 25 mm	138	121	138	414	207	276
1 1/4" - 31 mm	121	24	103	345	69	207
1 1/2" - 38 mm	103	24	103	345	69	207
2" - 51 mm	103	28	34	276	52	69

Shut Off Type

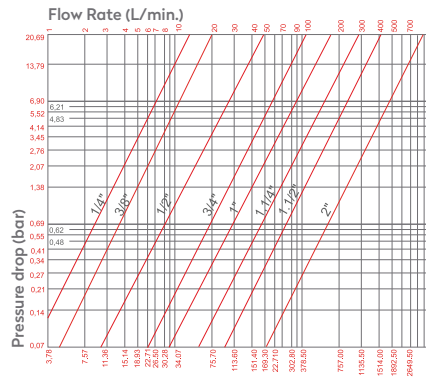
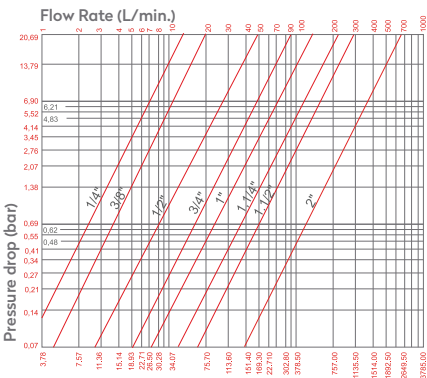


DN

6 - 32 mm



-40°C to + 105°C (NBR)



Options

STEEL	FPM	NPT	E3
NICKEL	EPDM	AISI303 Stainless Steel	AISI316 Stainless Steel

Applications

- General Purpose

Compatible with

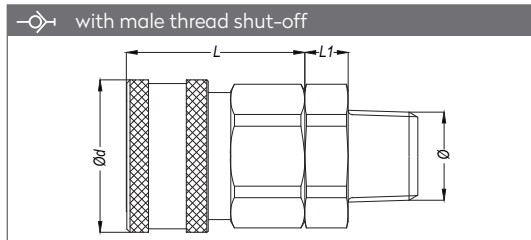
SNAP - TITE H serie

MULTI PURPOSE COUPLINGS
 MEHRFACHE ANWENDUNGEN

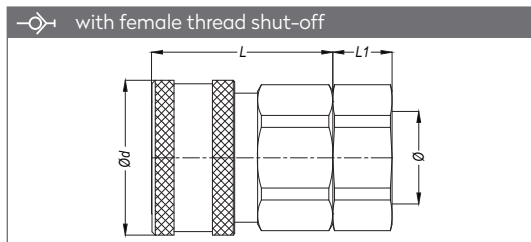
SERIE 165



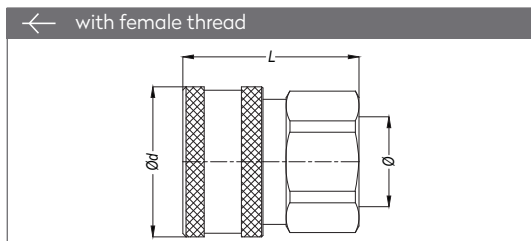
QUICK COUPLINGS SCHNELLKUPPLUNGEN



with Valve	Ø	with Valve	Ø	DN	L	L1	Ød	SW
165.04 RGB 13	BSPT 1/4"	165.04 TGB 13	NPT 1/4"	04-6.5 mm	34	7	25.7	22
165.06 RGB 17	BSPT 3/8"	165.06 TGB 17	NPT 3/8"	06-10 mm	38	6	31	24
165.08 RGB 21	BSPT 1/2"	165.08 TGB 21	NPT 1/2"	08-13 mm	41	10	35	30
165.12 RGB 26	BSPT 3/4"	165.12 TGB 26	NPT 3/4"	12-19 mm	48.7	10	42	36
165.16 RGB 33	BSPT 1"	165.16 TGB 33	NPT 1"	16-25 mm	52.5	15	50	50
165.20 RGB 42	BSPT 1 1/4"	165.20 TGB 42	NPT 1 1/4"	20-31 mm	58	9.3	50	50
165.24 RGB 48	BSPT 1 1/2"	165.24 TGB 48	NPT 1 1/2"	24-38 mm	65.2	18	69.9	66
165.32 RGB 60	BSPT 2"	165.32 TGB 60	NPT 2"	32-51 mm	80	17.6	90	88

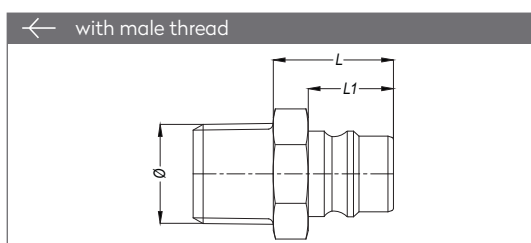


with Valve	Ø	with Valve	Ø	DN	L	L1	Ød	SW
165.04 DGB 13	BSP 1/4"	165.04 NGB 13	NPT 1/4"	04-6.5 mm	34.1	9.8	25.7	22
165.06 DGB 17	BSP 3/8"	165.06 NGB 17	NPT 3/8"	06-10 mm	38	15	31	24
165.08 DGB 21	BSP 1/2"	165.08 NGB 21	NPT 1/2"	08-13 mm	41	13.5	35	30
165.12 DGB 26	BSP 3/4"	165.12 NGB 26	NPT 3/4"	12-19 mm	48.7	14.5	42	36
165.16 DGB 33	BSP 1"	165.16 NGB 33	NPT 1"	16-25 mm	52.5	15.5	50	50
165.20 DGB 42	BSP 1 1/4"	165.20 NGB 42	NPT 1 1/4"	20-31 mm	58	26.8	55	50
165.24 DGB 48	BSP 1 1/2"	165.24 NGB 48	NPT 1 1/2"	24-38 mm	65.2	18	70	64
165.32 DGB 60	BSP 2"	165.32 NGB 60	NPT 2"	32-51 mm	79.8	20	89	86

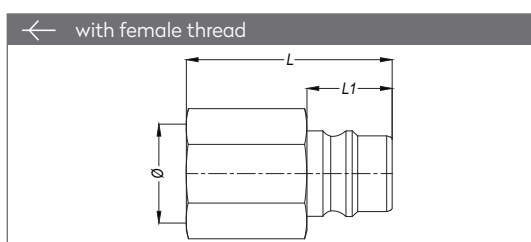


Without Valve	Ø	DN	L	Without Valve	Ø	L	Ød	SW
165.04 DGF 13	BSP 1/4"	04-6.5 mm	34.1	165.04 NGF 13	NPT 1/4"	34.1	25.7	22
165.06 DGF 17	BSP 3/8"	06-10 mm	38	165.06 NGF 17	NPT 3/8"	38	31	24
165.08 DGF 21	BSP 1/2"	08-13 mm	41	165.08 NGF 21	NPT 1/2"	41	35	30
165.12 DGF 26	BSP 3/4"	12-19 mm	48.7	165.12 NGF 26	NPT 3/4"	48.7	42	36
165.16 DGF 33	BSP 1"	16-25 mm	49.5	165.16 NGF 33	NPT 1"	49.5	50	50
165.20 DGF 42	BSP 1 1/4"	20-31 mm	58	165.20 NGF 42	NPT 1 1/4"	58	55	50
165.24 DGF 48	BSP 1 1/2"	24-38 mm	65.2	165.24 NGF 48	NPT 1 1/2"	65.2	70	63
165.32 DGF 60	BSP 2"	32-51 mm	63	165.32 NGF 60	NPT 2"	70	89	82

PLUGS STECKNIPPEL



Without Valve	Ø	Without Valve	Ø	DN	L	L1	SW
165.04 RU 13	BSPT 1/4"	165.04 TU 13	NPT 1/4"	04-6.5 mm	21	15	16
165.06 RU 17	BSPT 3/8"	165.06 TU 17	NPT 3/8"	06-10 mm	26.4	18.4	19
165.08 RU 21	BSPT 1/2"	165.08 TU 21	NPT 1/2"	08-13 mm	25.5	18.1	24
165.12 RU 26	BSPT 3/4"	165.12 TU 26	NPT 3/4"	12-19 mm	32.6	22.6	30
165.16 RU 33	BSPT 1"	165.16 TU 33	NPT 1"	16-25 mm	39	23	38
165.20 RU 42	BSPT 1 1/4"	165.20 TU 42	NPT 1 1/4"	20-31 mm	32.6	23.3	50
165.24 RU 48	BSPT 1 1/2"	165.24 TU 48	NPT 1 1/2"	24-38 mm	34	27.3	54
165.32 RU 60	BSPT 2"	165.32 TU 60	NPT 2"	32-51 mm	51.6	34	63

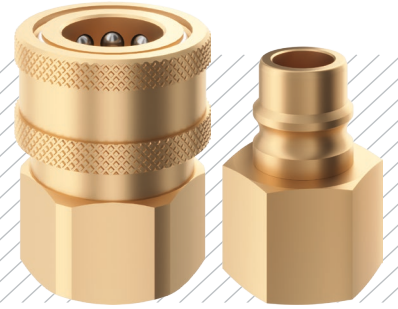


Without Valve	Ø	Without Valve	Ø	DN	L	L1	SW
165.04 DU 13	BSP 1/4"	165.04 NU 13	NPT 1/4"	04-6.5 mm	32.7	15	16
165.06 DU 17	BSP 3/8"	165.06 NU 17	NPT 3/8"	06-10 mm	36.6	18.4	24
165.08 DU 21	BSP 1/2"	165.08 NU 21	NPT 1/2"	08-13 mm	37.5	18.1	25
165.12 DU 26	BSP 3/4"	165.12 NU 26	NPT 3/4"	12-19 mm	44	22.6	30
165.16 DU 33	BSP 1"	165.16 NU 33	NPT 1"	16-25 mm	54	23	38
165.20 DU 42	BSP 1 1/4"	165.20 NU 42	NPT 1 1/4"	20-31 mm	54	23.3	50
165.24 DU 48	BSP 1 1/2"	165.24 NU 48	NPT 1 1/2"	24-38 mm	62	27.3	54
165.32 DU 60	BSP 2"	165.32 NU 60	NPT 2"	32-51 mm	66	34	70

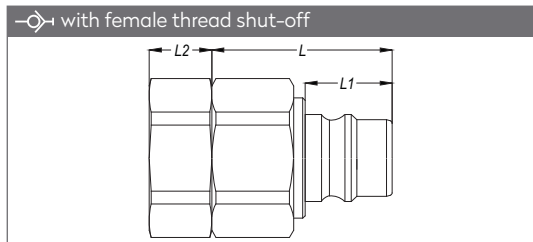
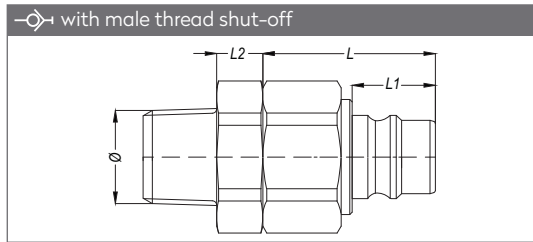
MOULD COUPLINGS

KUPPLUNGEN FÜR WERKZEUGE

SERIE 165



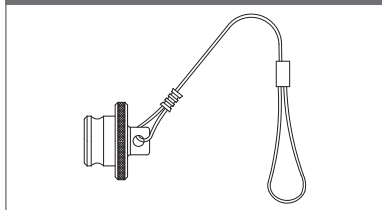
PLUGS STECKNIPPEL



with male thread shut-off			with female thread shut-off						
/ With Valve	Ø	L2	/ With Valve	DN	Ø	L	L1	L2	SW
165.04 RUB 13	BSPT 1/4"	19	165.04 TUB 13	04-6.5 mm	NPT 1/4"	32.7	15	20	22
165.06 RUB 17	BSPT 3/8"	19	165.06 TUB 17	06-10 mm	NPT 3/8"	36.6	18.4	19	24
165.08 RUB 21	BSPT 1/2"	26	165.08 TUB 21	08-13 mm	NPT 1/2"	37.5	18.3	27	30
165.12 RUB 26	BSPT 3/4"	28	165.12 TUB 26	12-19 mm	NPT 3/4"	45.5	22.6	29	36
165.16 RUB 33	BSPT 1"	38	165.16 TUB 33	16-25 mm	NPT 1"	50	23	-	50
165.20 RUB 42	BSPT 1 1/4"	33.3	165.20 TUB 42	20-31 mm	NPT 1 1/4"	55	23.3	-	50
165.24 RUB 48	BSPT 1 1/2"	42	165.24 TUB 48	24-38 mm	NPT 1 1/2"	60.8	27.3	-	64
165.32 RUB 60	BSPT 2"	-	165.32 TUB 60	32-51 mm	NPT 2"	74.5	34	-	86

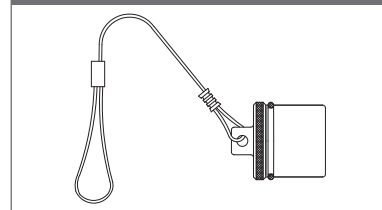
with male thread shut-off			with female thread shut-off						
/ With Valve	Ø	L2	/ With Valve	DN	Ø	L	L1	L2	SW
165.04 DUB 13	BSP 1/4"	9.8	165.04 NUB 13	04-6.5 mm	NPT 1/4"	32.7	15	9.8	22
165.06 DUB 17	BSP 3/8"	15	165.06 NUB 17	06-10 mm	NPT 3/8"	36.6	18.4	19	24
165.08 DUB 21	BSP 1/2"	13.5	165.08 NUB 21	08-13 mm	NPT 1/2"	37.5	18.3	13.5	30
165.12 DUB 26	BSP 3/4"	14.5	165.12 NUB 26	12-19 mm	NPT 3/4"	45.5	22.6	14.5	36
165.16 DUB 33	BSP 1"	15.5	165.16 NUB 33	16-25 mm	NPT 1"	50	23	20.5	50
165.20 DUB 42	BSP 1 1/4"	26.8	165.20 NUB 42	20-31 mm	NPT 1 1/4"	55	23.3	31.8	50
165.24 DUB 48	BSP 1 1/2"	18	165.24 NUB 48	24-38 mm	NPT 1 1/2"	60.8	27.3	18	64
165.32 DUB 60	BSP 2"	20	165.32 NUB 60	32-51 mm	NPT 2"	74.5	34	25	86

Aluminium Dust Cap Of The Socket



Part no.	DN
165.04 KG 00	04-6.5 mm
165.06 KG 00	06-10 mm
165.08 KG 00	08-13 mm
165.12 KG 00	12-19 mm
165.16 KG 00	16-25 mm
165.20 KG 00	20-31 mm
165.24 KG 00	24-38 mm
165.32 KG 00	32-51 mm

Aluminium Dust Cap Of The Plug



Part no.	DN
165.04 KU 00	04-6.5 mm
165.06 KU 00	06-10 mm
165.08 KU 00	08-13 mm
165.12 KU 00	12-19 mm
165.16 KU 00	16-25 mm
165.20 KU 00	20-31 mm
165.24 KU 00	24-38 mm
165.32 KU 00	32-51 mm