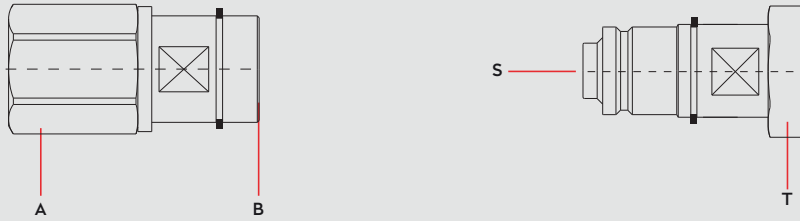



Materials




Material Code

- A = Brass
- B = Brass
- S = Brass
- T = Brass

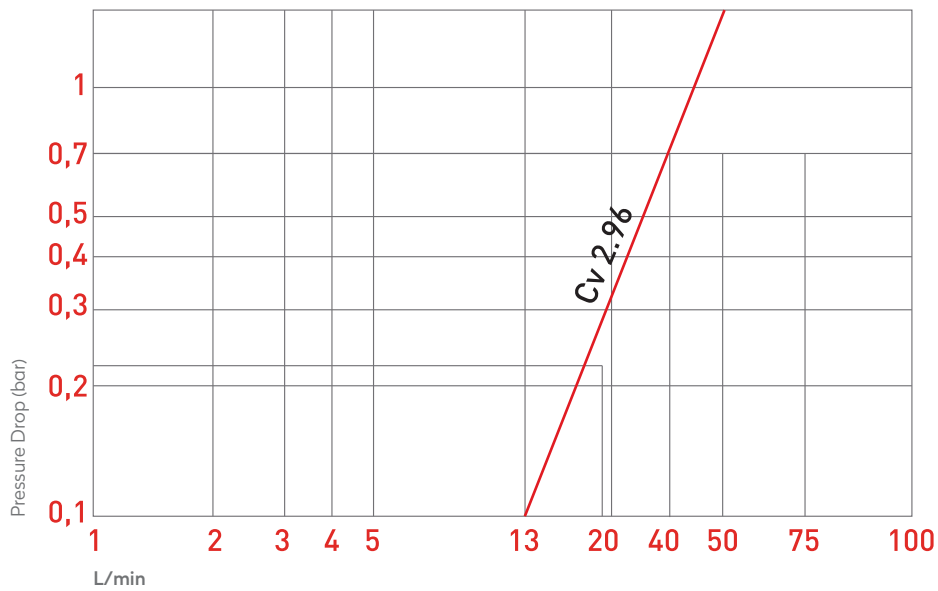


0 - 16 bar




-26°C to + 200°C (FPM)

Shut Off Type

FF



COUPLING	OV 262- 01235 OV 262 - 01435 OV 178 - 01660
PLUG	OV 178 - 00605 OV 178 - 01660

**Applications**

- Temperature controlling

DN 9 mm

Compatible with EAS

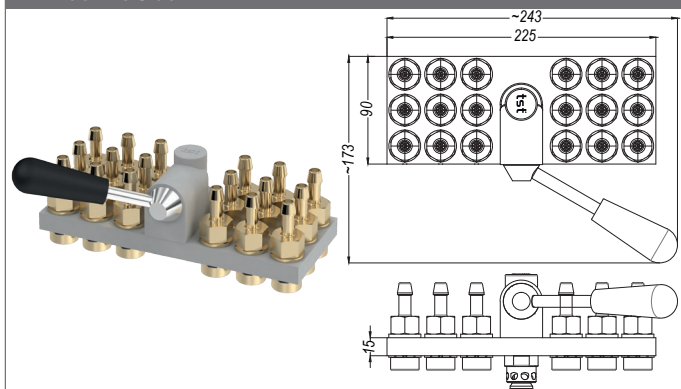
9 ↔ 9

# SERIE 150.09M

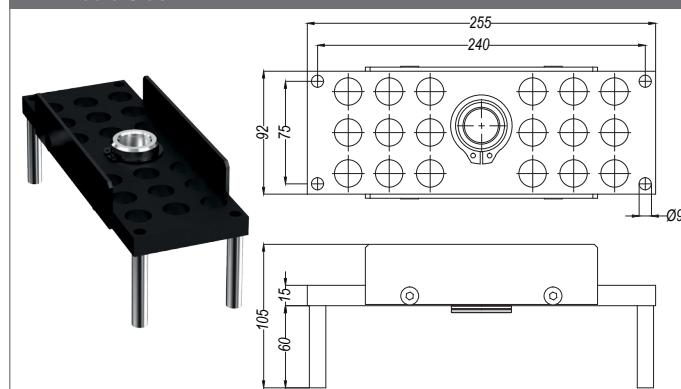
**Multi Couplings Systems** for quick changing of injection moulding and die cast equipments

**Multikupplungensysteme** für schnelles Wechseln und Verbinden der Kokillen und Spritzgußformen

Machine Side



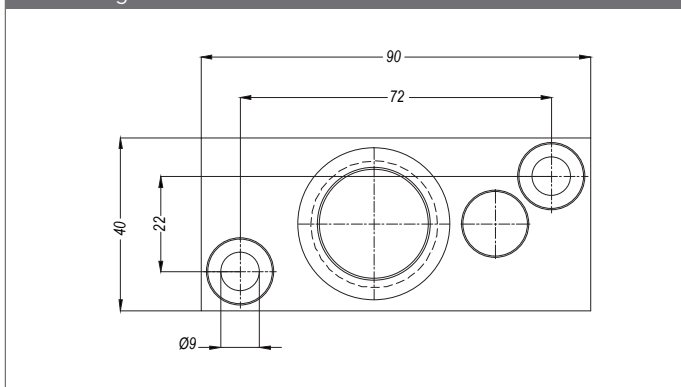
Mould Side



Part No.	Unit	Ø
MM150.09-18	-	without couplings
MM150.09-18 HGB 10	18	Hose tail 10 mm
MM150.09-18 HGB 13	18	Hose tail 13 mm
MM150.09-18 FGB 10	18	Push-Lock Hose tail 10 mm
MM150.09-18 FGB 13	18	Push-Lock Hose tail 13 mm
MM150.09-18 DGB 17	18	BSP female 3/8"
MM150.09-18 NGB 17	18	NPT female 3/8"

Part No.	Unit	Ø
MK150.09-18	-	without plugs
MK150.09-18 DUB 17	18	BSP female 3/8" with valve
MK150.09-18 NUB 17	18	NPT female 3/8" with valve
MK150.09-18 DU 17	18	BSP female 3/8" without valve
MK150.09-18 NU 17	18	NPT female 3/8" without valve

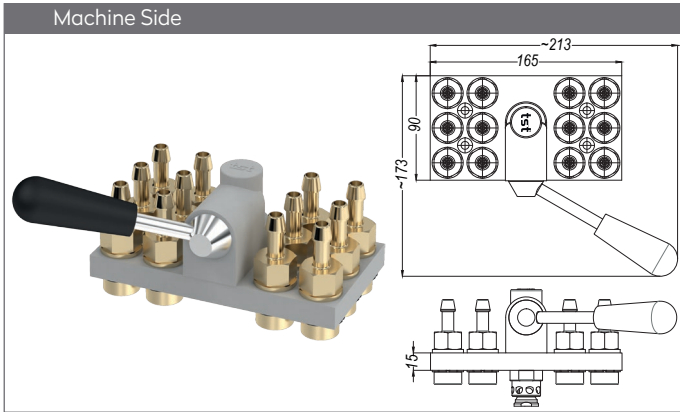
Parking Plate



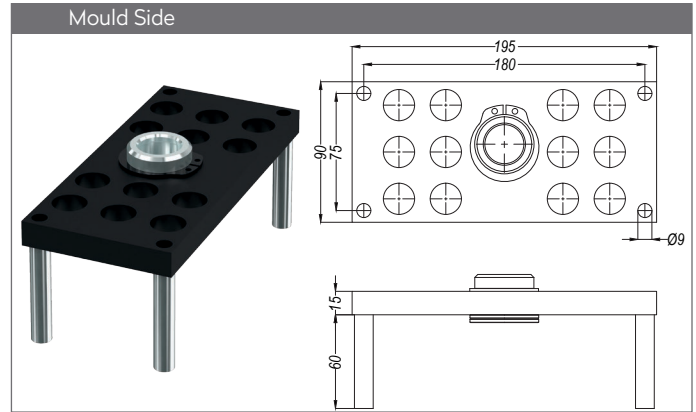
Part No.

MM150.09 P

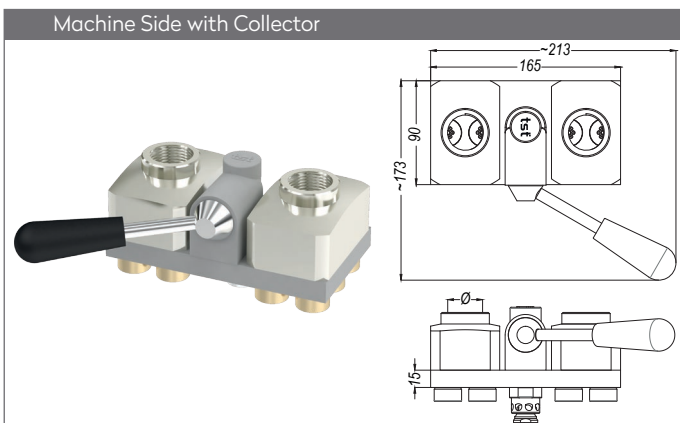
# SERIE 150.09M



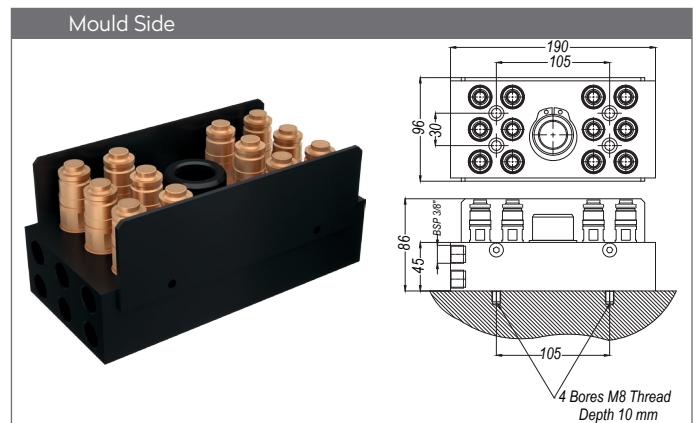
Part No.	Unit	Ø
MM150.09-12	-	without couplings
MM150.09-12 HGB 10	12	Hose tail 10 mm
MM150.09-12 HGB 13	12	Hose tail 13 mm
MM150.09-12 FGB 10	12	Push-Lock Hose tail 10 mm
MM150.09-12 FGB 13	12	Push-Lock Hose tail 13 mm
MM150.09-12 DGB 17	12	BSP female 3/8"
MM150.09-12 NGB 17	12	NPT female 3/8"



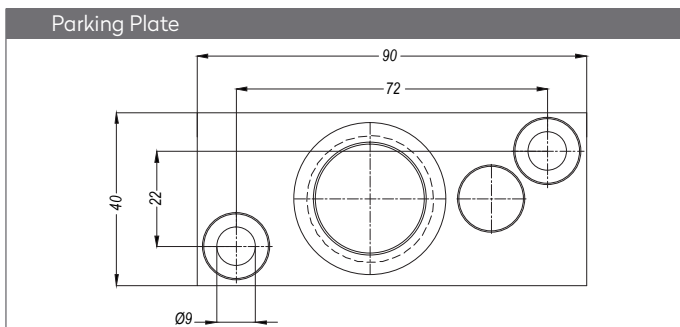
Part No.	Unit	Ø
MK150.09-12	-	without plugs
MK150.09-12 DUB 17	12	BSP female 3/8" with valve
MK150.09-12 NUB 17	12	NPT female 3/8" with valve
MK150.09-12 DU 17	12	BSP female 3/8" without valve
MK150.09-12 NU 17	12	NPT female 3/8" without valve



Part No.	Unit	Ø
MM150.09-12C	12	BSP female 1"
MM150.09-12CN	12	NPT female 1"



Part No.	Unit	Ø
MK150.09 - 12V	12	BSP 3/8"



Part No.
MM150.09 P

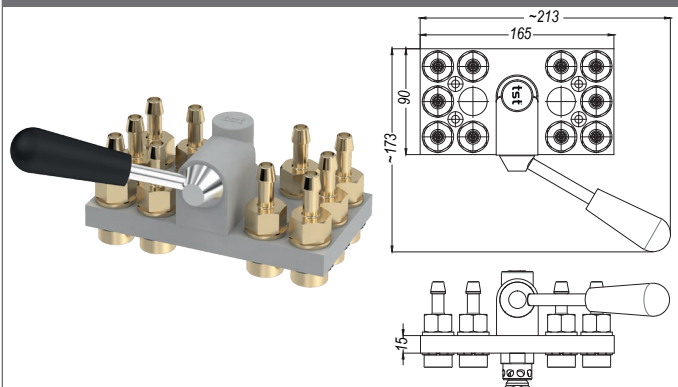
5 ↔ 5

# SERIE 150.09M

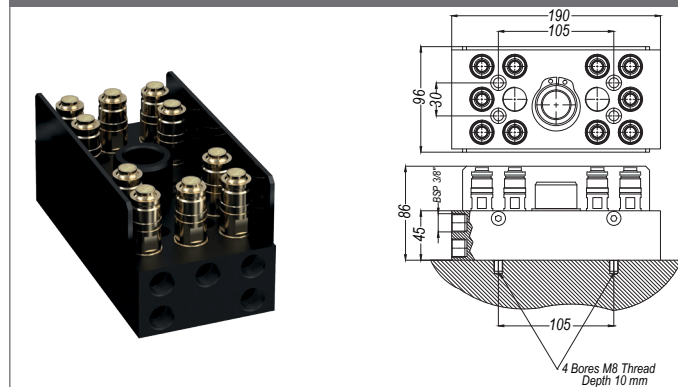
**Multi Couplings Systems** for quick changing of injection moulding and die cast equipments

**Multikupplungensysteme** für schnelles Wechseln und Verbinden der Kokillen und Spritzgußformen

Machine Side



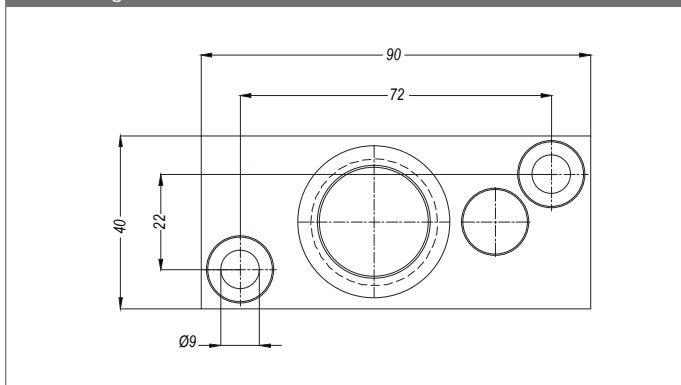
Mould Side



Part No.	Unit	Ø
MM150.09-12	-	without couplings
MM150.09-10 HGB 10	10	Hose tail 10 mm
MM150.09-10 HGB 13	10	Hose tail 13 mm
MM150.09-10 FGB 10	10	Push-Lock Hose tail 10 mm
MM150.09-10 FGB 13	10	Push-Lock Hose tail 13 mm
MM150.09-10 DGB 17	10	BSP female 3/8"
MM150.09-10 NGB 17	10	NPT female 3/8"

Part No.	Unit	Ø
MK150.09-10	10	Metric male M22x1 without valve
MK150.09-10V	10	Metric male M22x1 with valve

Parking Plate



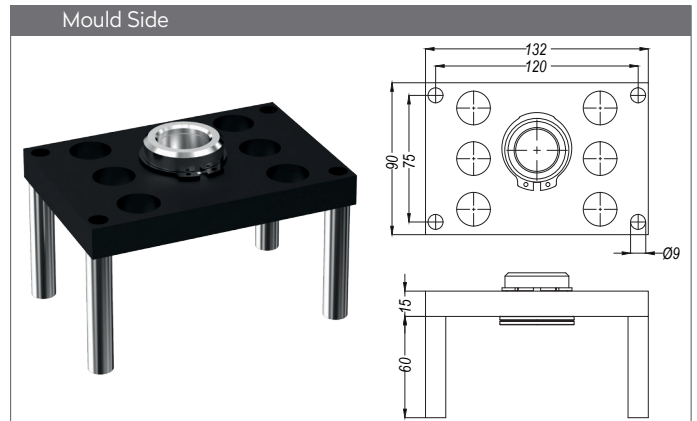
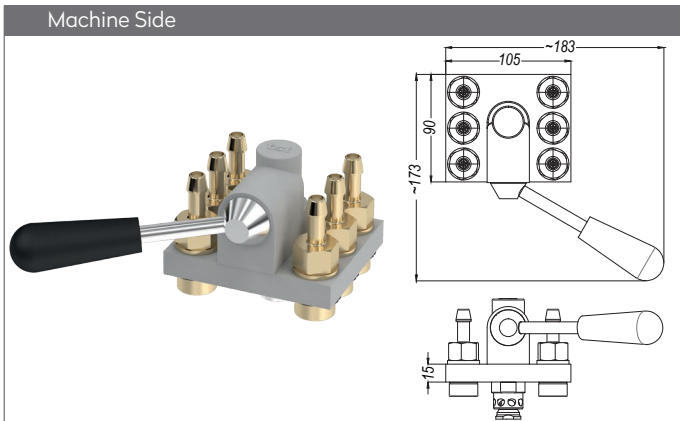
Part No.

MM150.09 P

# SERIE 150.09M

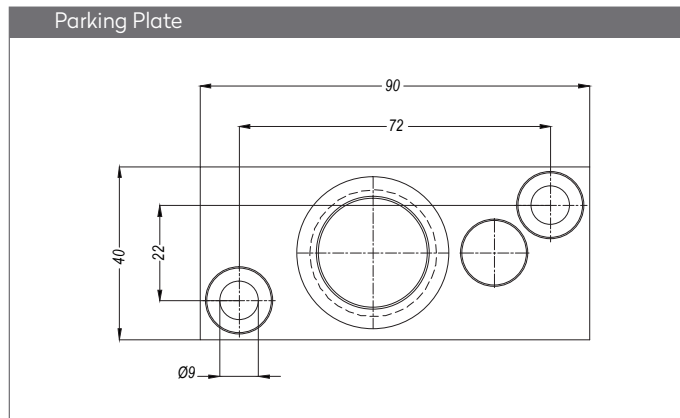
**Multi Couplings Systems** for quick changing of injection moulding and die cast equipments

**Multikupplungensysteme** für schnelles Wechseln und Verbinden der Kokillen und Spritzgußformen



Part No.	Unit	Ø
MM150.09-06	-	without couplings
MM150.09-06 HGB 10	6	Hose tail 10 mm
MM150.09-06 HGB 13	6	Hose tail 13 mm
MM150.09-06 FGB 10	6	Push-Lock Hose tail 10 mm
MM150.09-06 FGB 13	6	Push-Lock Hose tail 13 mm
MM150.09-06 DGB 17	6	BSP female 3/8"
MM150.09-06 NGB 17	6	NPT female 3/8"

Part No.	Unit	Ø
MK150.09-06	-	without plugs
MK150.09-06 DUB 17	6	BSP female 3/8" with valve
MK150.09-06 NUB 17	6	NPT female 3/8" with valve
MK150.09-06 DU 17	6	BSP female 3/8" without valve
MK150.09-06 NU 17	6	NPT female 3/8" without valve

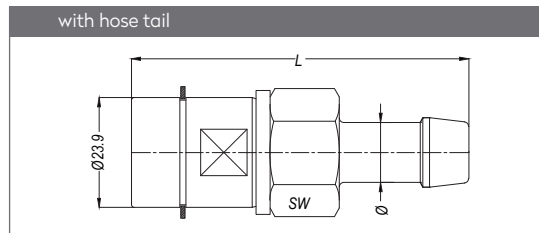


Part No.
MM150.09 P

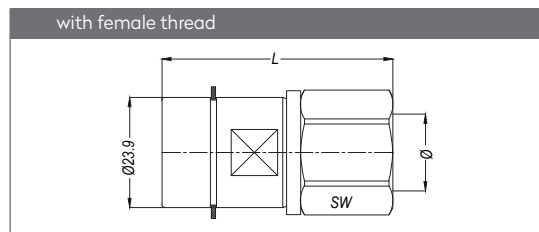
MULTICOUPLINGS  
 MULTIKUPPLUNGEN

## SERIE 150.09M

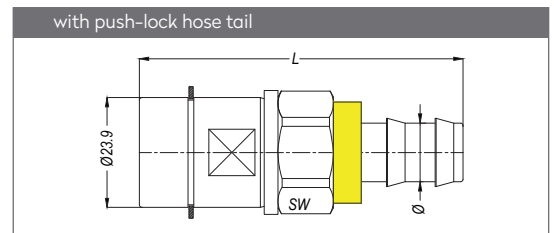
## QUICK COUPLINGS SCHNELLKUPPLUNGEN



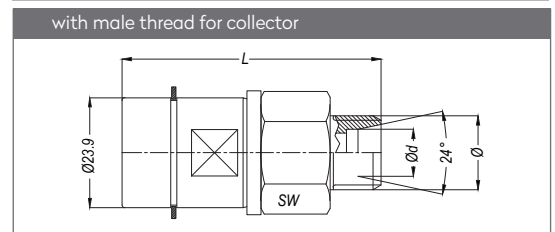
With Valve	Without Valve	SW	Ø	L
MM150.09 HGB 06	MM150.09 HGF 06	24	6	73
MM150.09 HGB 13	MM150.09 HGF 13	24	13	73



With Valve	Without Valve	SW	Ø	L
MM150.09 DGB 17	MM150.09 DGF 17	24	BSP 3/8"	50
MM150.09 NGB 17	MM150.09 NGF 17	24	NPT 3/8"	55

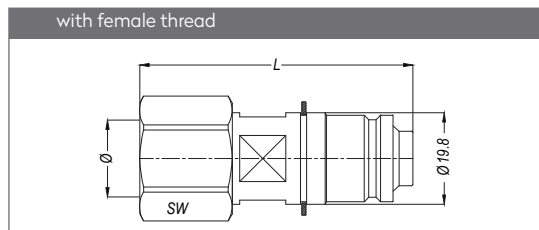


With Valve	Without Valve	SW	Ø	L
MM150.09 FGB 09	MM150.09 FGF 09	24	9	70
MM150.09 FGB 13	MM150.09 FGF 13	24	13	70

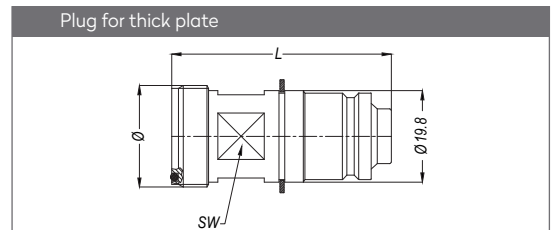


With Valve	Without Valve	Ø	Ød	SW	L
MM109 EGBM 16-10	-	M16x1.5	10.2	24	56
MM109 EGBM 18-12	-	M18x1.5	10.2	24	57

## PLUGS STECKNIPPEL

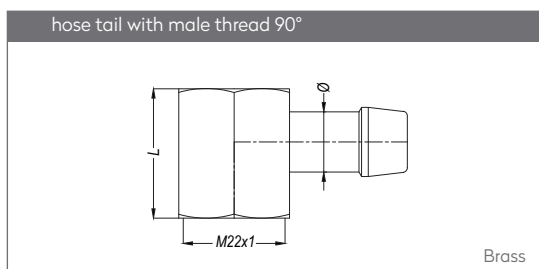


With Valve	Without Valve	SW	Ø	L
MK150.09 DUB 17	MK150.09 DUF 17	24	BSP 3/8"	59.1
MK150.09 NUB 17	MK150.09 NUF 17	24	NPT 3/8"	64.1

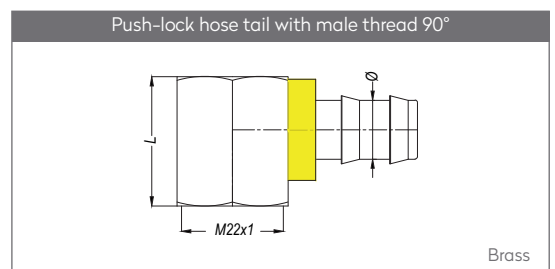


With Valve	Without Valve	SW	Ø	L
150.09 EUBM 22x1	-	18	M22x1	47.5

## ACCESSORIES ZUBEHÖR

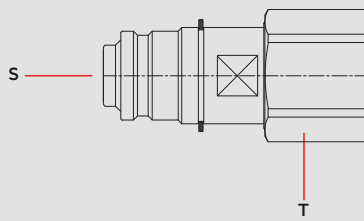
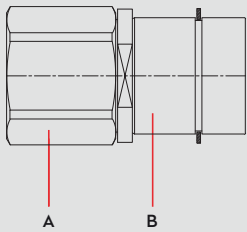


Part No.	L	Ø
150.09 DB 13 x 28	28	13
150.09 DB 13 x 52	52	13



Part No.	L	Ø
150.09 DF 13 x 28	28	12.8
150.09 DF 13 x 52	52	12.8

Materials



Material Code

A = Brass

B = Brass

S = Brass

T = Brass



0 - 16 bar



-26°C to + 200°C (FPM)

Shut Off  
Type



COUPLING  
PLUG

OV 262- 01715  
OV 262 - 01510  
OV 178 - 02035  
07210VC00V  
OV 178 - 00925  
OV 178 - 02035

DN

12 mm

FF

Applications

- Temperature controlling

Compatible with

EAS

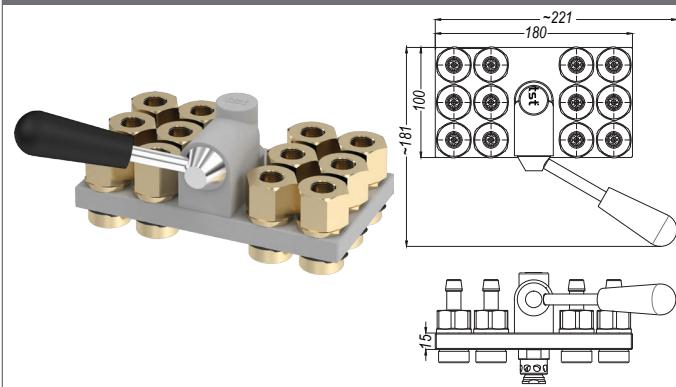
6 ↔ 6

# SERIE 150.12M

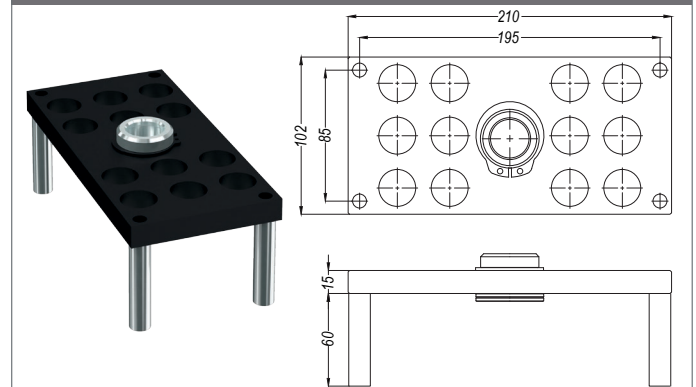
**Multi Couplings Systems** for quick changing of injection moulding and die cast equipments

**Multikupplungensysteme** für schnelles Wechseln und Verbinden der Kokillen und Spritzgußformen

Machine Side



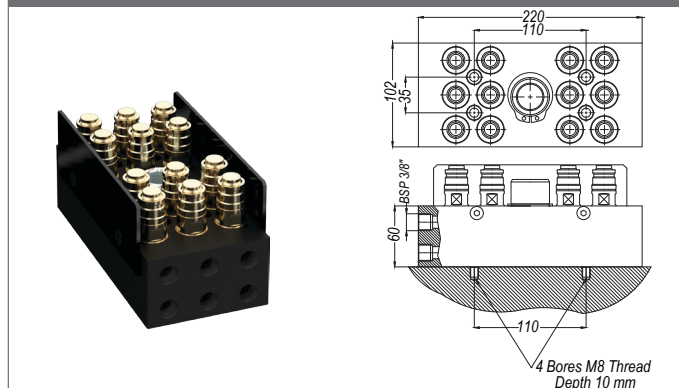
Mould Side



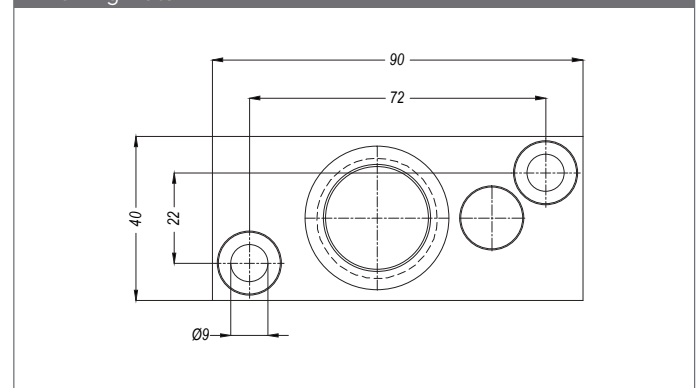
Part No.	Unit	Ø
MM150.12-12	-	without couplings
MM150.12-12 HGB 10	12	Hose tail 10 mm
MM150.12-12 HGB 13	12	Hose tail 13 mm
MM150.12-12 FGB 10	12	Push-Lock Hose tail 10 mm
MM150.12-12 FGB 13	12	Push-Lock Hose tail 13 mm
MM150.12-12 DGB 17	12	BSP female 3/8"
MM150.12-12 NGB 17	12	NPT female 3/8"

Part No.	Unit	Ø
MK150.12-12	-	without plugs
MK150.12-12 DUB 17	12	BSP female 3/8" with valve
MK150.12-12 NUB 17	12	NPT female 3/8" with valve
MK150.12-12 DU 17	12	BSP female 3/8" without valve
MK150.12-12 NU 17	12	NPT female 3/8" without valve

Mould Side



Parking Plate



Part No.	Unit	Ø
MK150.12-12V	12	Metric male M27x1

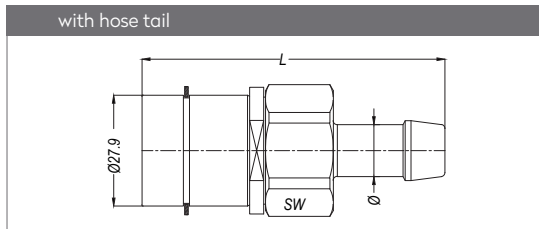
Part No.
MM150.09 P



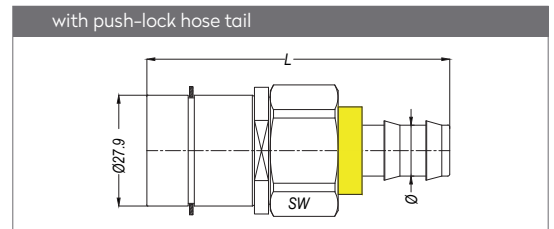
MULTICOUPLINGS  
MULTIKUPPLUNGEN

# SERIE 150.12M

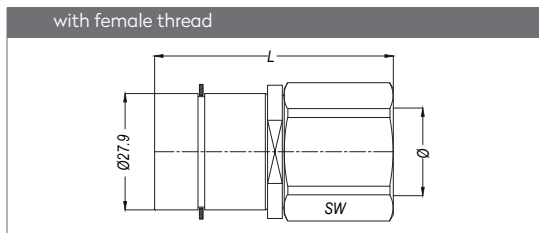
## QUICK COUPLINGS SCHNELLKUPPLUNGEN



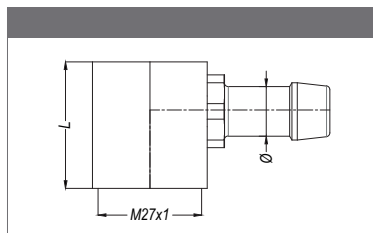
↻	←	SW	Ø	L
With Valve	Without Valve			
150.12 HGB 12	150.12 HGF 12	30	12	76
150.12 HGB 13	150.12 HGF 13	30	13	76
150.12 HGB 16	150.12 HGF 16	30	16	76
150.12 HGB 19	150.12 HGF 19	30	19	76



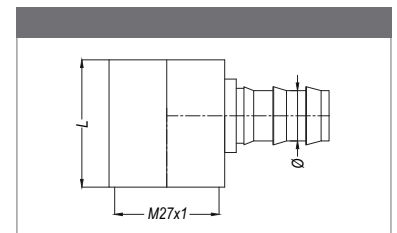
↻	←	SW	Ø	L
With Valve	Without Valve			
150.12 FGB 16	150.12 FGF 16	30	16	76
150.12 FGB 19	150.12 FGF 19	30	19	76



↻	←	SW	Ø	L
With Valve	Without Valve			
150.12 DGB 21	150.12 DGF 21	30	BSP 1/2"	57
150.12 NGB 21	150.12 NGF 21	30	NPT 1/2"	62

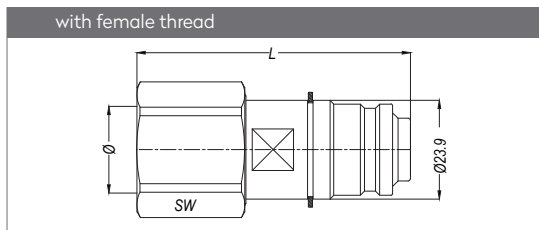


Part No.	Ød	L
150.12 DB 13x33	13	33
150.12 DB 13x57	13	57
150.12 DB 16x33	16	33
150.12 DB 16x57	16	57

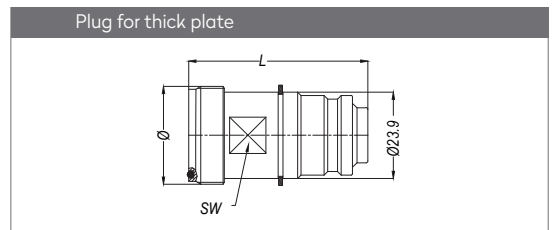


Part No.	Ød	L
150.12 DF 13x33	13	33
150.12 DF 13x57	13	57
150.12 DF 16x33	16	33
150.12 DF 16x57	16	57

## PLUGS STECKNIPPEL

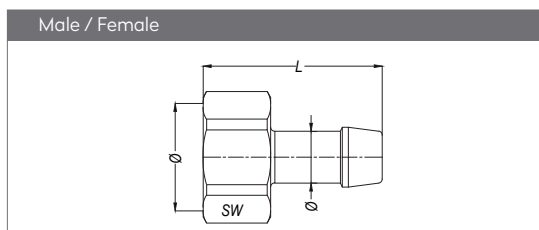


↻	←	SW	Ø	L
With Valve	Without Valve			
150.12 DUB 21	150.12 DUF 21	30	BSP 1/2"	66
150.12 NUB 21	150.12 NUF 21	30	NPT 1/2"	71

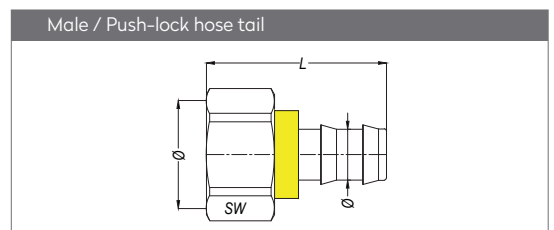


↻	←	SW	Ø	L
With Valve	Without Valve			
150.12 EUBM27x1	-	22	M27x1	49.5

## ACCESSORIES ZUBEHÖR



Part No.	Ød	SW	Ø	L
150.12 FA 10	10	30	M27x1	41
150.12 FA 16	16	30	M27x1	55
150.12 FA 19	19	30	M27x1	55



Part No.	Ød	SW	Ø	L
150.12 HA 12	12	30	M27x1	45
150.12 HA 13	13	30	M27x1	45
150.12 HA 16	16	30	M27x1	45
150.12 HA 17	17	30	M27x1	45
150.12 HA 19	19	30	M27x1	45