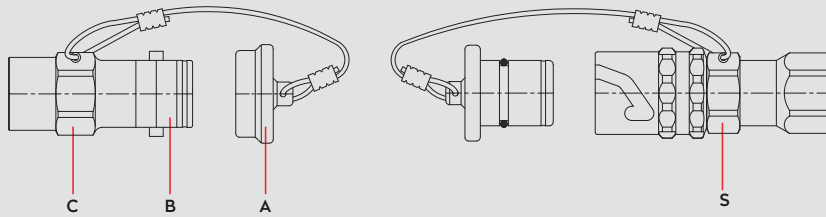


Materials



Material Code

A = Black Delrin  
\*Serie 128.03 → Aluminium  
  
B = AISI 316  
  
C = AISI 316  
  
S = AISI 316

<b>DN</b>	TST 128.03 → 3 mm
	TST 128.05 → 5 mm
	TST 128.08 → 8 mm
	TST 128.12 → 12 mm

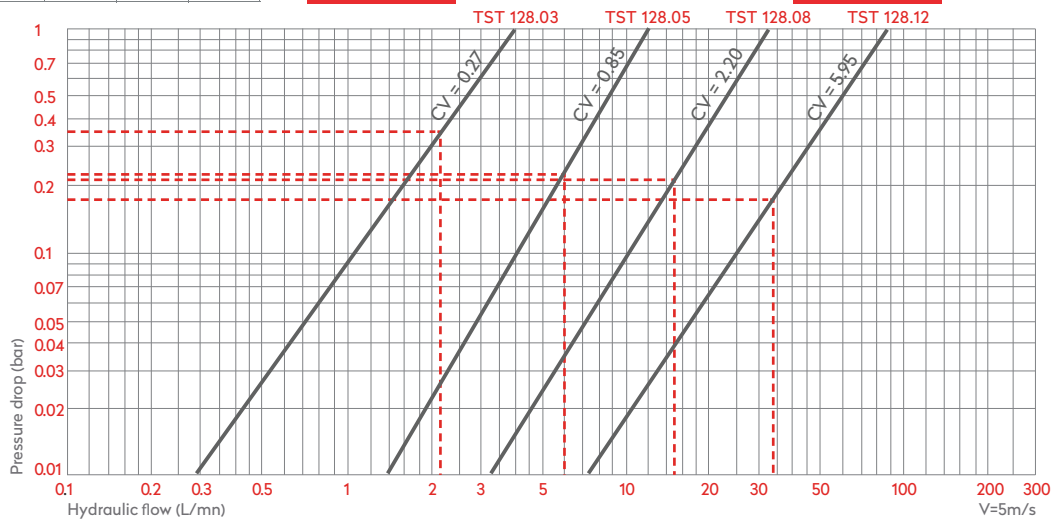
-40° to +105°C (NBR)

**Shut Off Type**

<b>DN</b>	3	5	8	12
	350 bar	160 bar	80 bar	50 bar

**FF**

**E2**



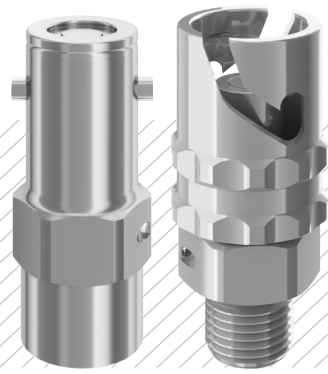
**Options**

FPM FFKM 128.08

**Applications**

- Mold Cooling
- Chemical Industry

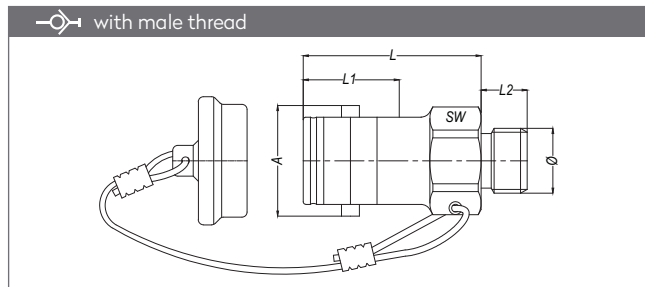
**Compatible with**



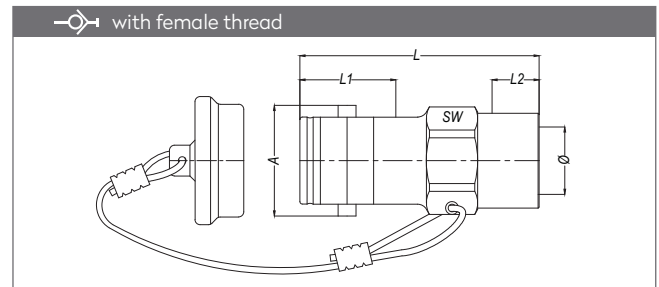
MULTI PURPOSE COUPLINGS  
MEHRFACHE ANWENDUNGEN

# SERIE 128

## QUICK COUPLINGS SCHNELLKUPPLUNGEN

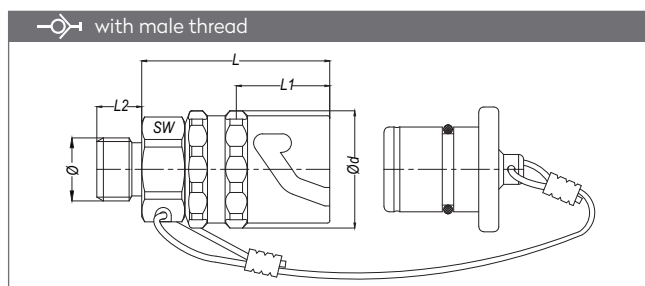


Part No.	DN	Ø	A	L	L1	L2	SW
128.03 EGB 10	3	BSP 1/8"	16.6	38.6	18	7.9	14
128.05 EGB 13	5	BSP 1/4"	21.2	33.5	19	11	19
128.08 EGB 17	8	BSP 3/8"	28	37.9	23.5	12	27
128.12 EGB 21	12	BSP 1/2"	27.9	53.9	36.2	14	36

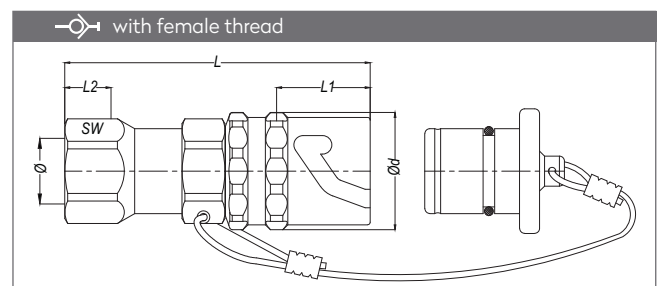


Part No.	DN	Ø	A	L	L1	L2	SW
128.03 DGB 10	3	BSP 1/8"	16.6	46.5	18	10.5	14
128.05 DGB 13	5	BSP 1/4"	21.2	46.7	18.7	13	19
128.08 DGB 17	8	BSP 3/8"	27.9	49.9	23.2	13	27
128.12 DGB 21	12	BSP 1/2"	39.6	69.4	36.2	16.5	36

## PLUGS STECKNIPPEL



Part No.	DN	Ø	Ød	L	L1	L2	SW
128.03 EUB 10	3	BSP 1/8"	18.9	35.8	18	7.9	14
128.05 EUB 13	5	BSP 1/4"	23.5	37.5	18.7	11	19
128.08 EUB 17	8	BSP 3/8"	30.5	56.4	23.2	12	22
128.12 EUB 21	12	BSP 1/2"	41.5	72.6	36.2	14	27



Part No.	DN	Ø	Ød	L	L1	L2	SW
128.03 DUB 10	3	BSP 1/8"	18.9	48.8	18	9.5	14
128.05 DUB 13	5	BSP 1/4"	23.5	61.2	18.7	12	19
128.08 DUB 17	8	BSP 3/8"	30.5	68.6	23.2	13	22
128.12 DUB 21	12	BSP 1/2"	41.5	91.6	36.2	16	27