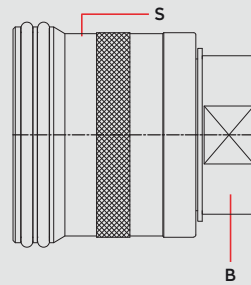
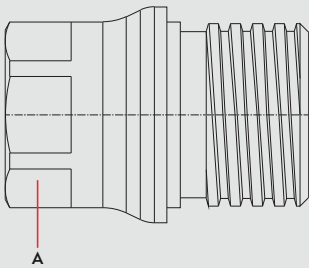


DN 37

 MOULD COOLING COUPLINGS
 KÜHLUNGSELEMENTE FÜR WERKZEUGE

SERIE 127

Materials

Material Code

A = Brass / Chemical Nickel Plated

B = Brass

C = AISI 303

S = AISI 303



0 - 10 bar



-40°C to + 105°C (NBR)

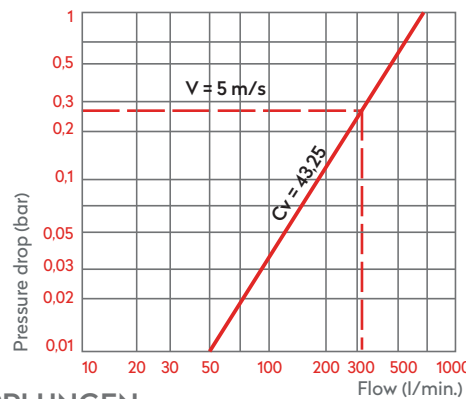
Shut Off Type

COUPLING

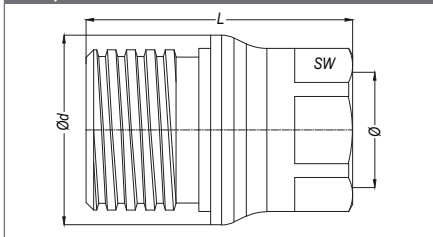
 OM 353 - 06350 - 90
 OM 353 - 03455 - 90
 TC - 7020 - 6400 - 13

PLUG

 OM 534 - 08510
 OM 353 - 03455 - 90

Screw Type

DN
37 mm
QUICK COUPLINGS SCHNELLKUPPLUNGEN

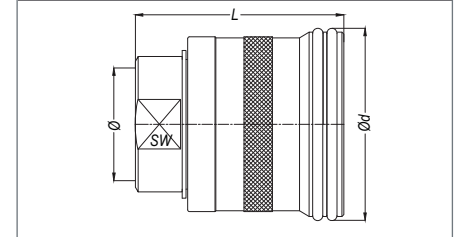
with female thread



Part No.	Ø	Ød	L	SW
127.37 DGB 60	BSP 2"	98	138	77
127.37 NGB 60	NPT 2"	98	138	77
127.37 UGB 63	UN 2 1/2"-12	98	138	77

PLUGS STECKNIPPEL

with female thread



Part No.	Ø	Ød	L	SW
127.37 DUB 60	BSP 2"	98	111	67
127.37 NUB 60	NPT 2"	98	111	67
127.37 UUB 63	UN 2 1/2"-12	98	111	67