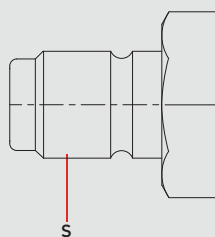
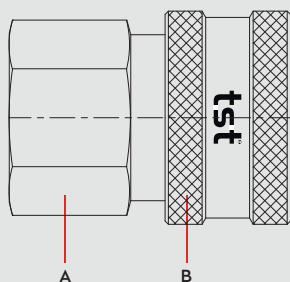


DN12

WATER COUPLINGS
WASSERKUPPLUNGEN

SERIE 121

Materials



Material Code

A = Stainless Steel AISI316

B = Stainless Steel AISI316

S = Stainless Steel AISI316



Stainless Steel
0 - 100 bar



-26° to + 200°C (FPM)

Shut Off
Type



OV 262 - 01785
OV 262 - 01510

FULL FLOW

DN

12 mm

PLASTIC
SLEEVE

121 SP01



Options

EPDM

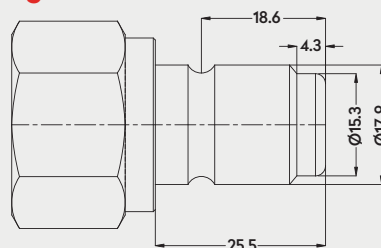
AISI303
Stainless Steel

Brass
Ms 58

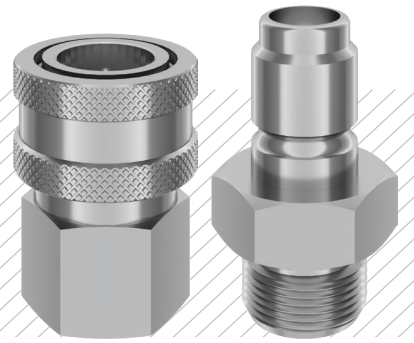
NICKEL

PLASTIC
SLEEVE
121 SP01

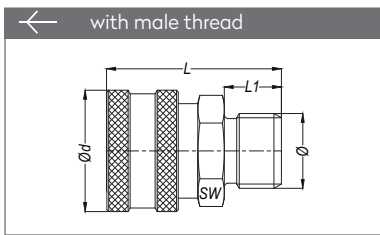
Plug Profile Serie 121



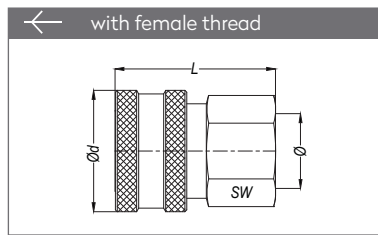
Compatible with



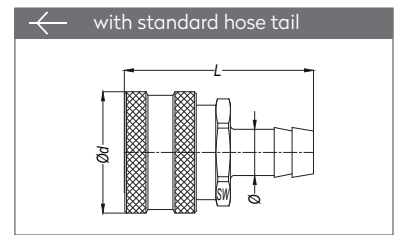
QUICK COUPLINGS SCHNELLKUPPLUNGEN



Part No.	Ø	SW	L	L1	Ød
121 EGF 17	BSP 3/8"	27	46	13	34
121 EGF 21	BSP 1/2"	27	49	16	34
121 EGF 26	BSP 3/4"	32	52	19	34

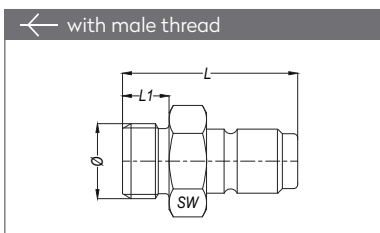


Part No.	Ø	SW	L	Ød
121 DGF 17	BSP 3/8"	27	45	34
121 DGF 21	BSP 1/2"	27	45	34

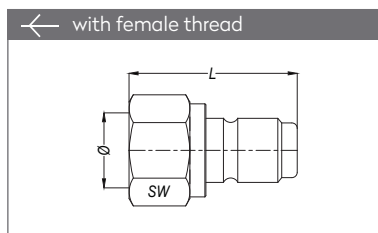


Part No.	Ø	L	Ød
121 HGF 13	Ø 13	53	34
121 HGF 16	Ø 16	62	34
121 HGF 19	Ø 19	62	34
121 HGF 25	Ø 25	62	34

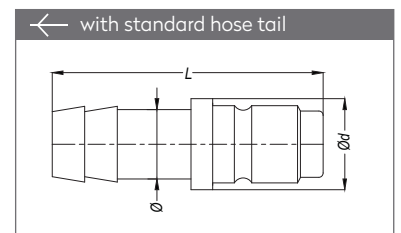
PLUGS STECKNIPPEL



Part No.	Ø	SW	L	L1
121 EU 13	BSP 1/4"	22	45	9
121 EU 17	BSP 3/8"	22	46	10
121 EU 21	BSP 1/2"	27	49	13
121 EU 26	BSP 3/4"	32	53	17



Part No.	Ø	SW	L
121 DU 13	BSP 1/4"	27	42
121 DU 17	BSP 3/8"	27	42
121 DU 21	BSP 1/2"	27	47
121 DU 26	BSP 3/4"	32	50



Part No.	Ø	L	Ød
121 HU 13	Ø 13	62,5	21
121 HU 16	Ø 16	62,5	21
121 HU 19	Ø 19	62,5	21