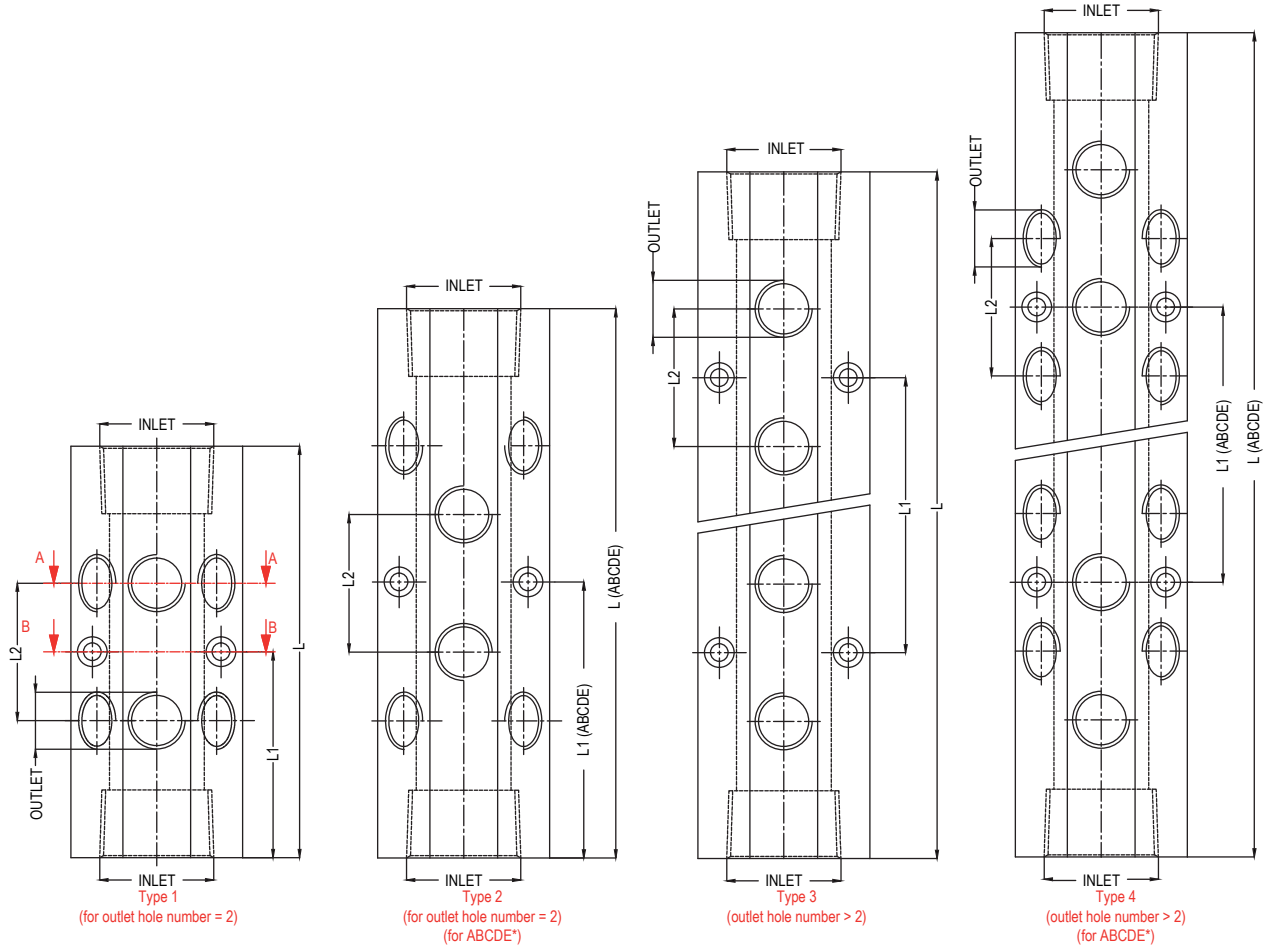
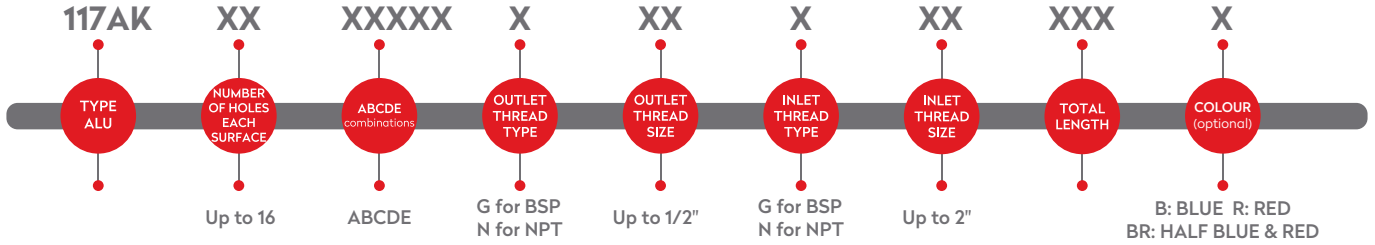
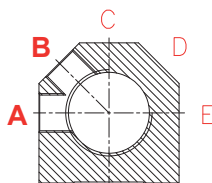


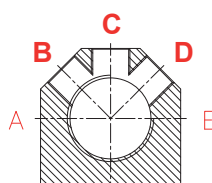
SERIE 117AK



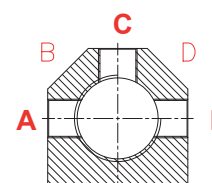
A-A Section



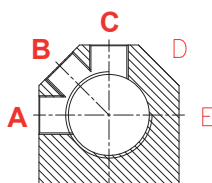
AB



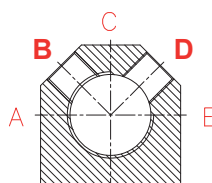
BCD



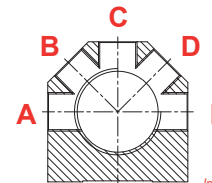
ACE



ABC



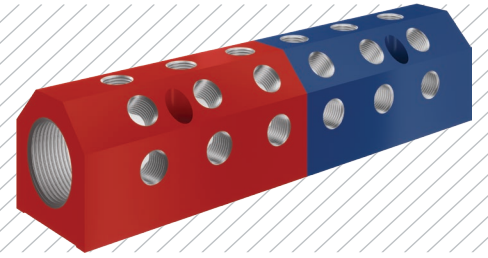
BD



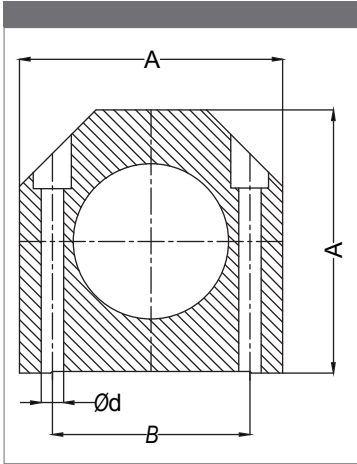
ABCDE*

In collectors with teeth on 5 surfaces, in case the tooth lengths do not save, it is made by shifting as in Type 2 & Type 4.

SERIE 117AK



B-B Section



INLET	A	B	Ød
3/4"	44.5	35	5
1"	50.8	38.1	6.5
1-1/4"	63.5	47.6	6.5
1-1/2"	76.2	57.2	6.5
2"	89	72.4	6.5

INLET: 3/4"

Number of Holes	Ø1 = OUTLET = 1/4" & 3/8"			Ø = INLET = 3/4"	
	L	L1	L(ABCDE) <small>Type 2 & 4</small>	L1(ABCDE) <small>Type 2 & 4</small>	L2
2	95	47.5	95	47.5	32
4	158.5	63.5	158.5	63.5	32
6	222	127	222	127	32
8	286	190.5	286	190.5	32
10	350	190.5	350	190.5	32
12	414	318.5	414	318.5	32
14	478	382.5	510	382.5	32

INLET: 1"

Number of Holes	Ø1 = OUTLET = 1/4" & 3/8"			Ø = INLET = 1"	
	L	L1	L(ABCDE) <small>inlet: 3/8" Type 2 & 4</small>	L1(ABCDE) <small>inlet: 3/8" Type 2 & 4</small>	L2
2	95	47.5	128	64	32
4	158.5 (159)	63.5	192	64	32
6	222	127	255.2	127	32
8	286	190.5	320	190.5	32
10	350	190.5	382	190.5	32
12	414	318.5	446	318.5	32
14	478	382.5	510	382.5	32

INLET: 1-1/4"

Number of Holes	Ø1 = OUTLET = 3/8" & 1/2"			Ø = INLET = 1-1/4"	
	L	L1	L(ABCDE) <small>inlet: 1/2" Type 2 & 4</small>	L1(ABCDE) <small>inlet: 1/2" Type 2 & 4</small>	L2
2	152	76	203	101.9	50.8
4	254	101.6	304	101.6	50.8
6	355	203.2	406	203.2	50.8
8	457	304.8	508	304.8	50.8

INLET: 1-1/2"

Number of Holes	Ø1 = OUTLET = 3/8" & 1/2"			Ø = INLET = 1-1/2"	
	L	L1	L2	L2	L2
2	152	76	50.8	50.8	50.8
4	254	101.6	50.8	50.8	50.8
6	355	203.2	50.8	50.8	50.8
8	457	304.8	50.8	50.8	50.8
10	558.6	406.4	50.8	50.8	50.8
12	552	508	50	50	50

Number of Holes	Ø1 = OUTLET = 3/8" & 1/2"			Ø = INLET = 2"	
	L	L1	L2	L2	L2
2	203	101.5	60	60	60
4	305	127	61	61	61
6	432	254	60	60	60
8	559	381	60	60	60