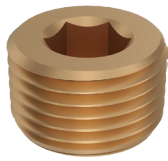


MOULD ACCESSORIES

WERKZEUGZUBEHÖR

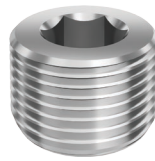
PRESSURE PLUGS

Brass - 1/16" Conical thread



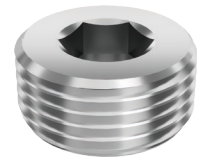
Material: MS58 (Brass) - (DIN 906)

Steel - 1/16" Conical thread



Material: Steel - (DIN 906)

Stainless Steel - 1/16" Conical thread



Material: Stainless Steel (AISI 303) (DIN 906)

BSPT PRESSURE PLUGS VERSCHLUSSSTOPFEN MIT BSPT

Part No.	Ø	L	SW
KTR 10	BSPT 1/8"	8	5
KTR 13	BSPT 1/4"	10	7
KTR 17	BSPT 3/8"	10	8
KTR 21	BSPT 1/2"	10	10
KTR 26	BSPT 3/4"	12	12
KTR 33	BSPT 1"	12	17
KTR 42	BSPT 1 1/4"	18	22
KTR 48	BSPT 1 1/2"	20	24

Part No.	Ø	L	SW
KTR 10-C	BSPT 1/8"	8	5
KTR 13-C	BSPT 1/4"	10	6
KTR 17-C	BSPT 3/8"	11	8
KTR 21-C	BSPT 1/2"	13	10
KTR 26-C	BSPT 3/4"	17	12
KTR 33-C	BSPT 1"	19	17
KTR 42-C	BSPT 1 1/4"	22	22
KTR 48-C	BSPT 1 1/2"	22	24

Part No.	Ø	L	SW
KTR 10-S3	BSPT 1/8"	8	5
KTR 13-S3	BSPT 1/4"	10	7
KTR 17-S3	BSPT 3/8"	10	8
KTR 21-S3	BSPT 1/2"	10	10
KTR 26-S3	BSPT 3/4"	12	12
KTR 33-S3	BSPT 1"	12	17
KTR 42-S3	BSPT 1 1/4"	18	22
KTR 48-S3	BSPT 1 1/2"	20	24

NPT PRESSURE PLUGS VERSCHLUSSSTOPFEN MIT NPT

Part No.	Ø	L	SW
KTN 10	NPT 1/8"	8	5
KTN 13	NPT 1/4"	10	7
KTN 17	NPT 3/8"	10	8
KTN 21	NPT 1/2"	12	10
KTN 26	NPT 3/4"	17	12
KTN 33	NPT 1"	19	17
KTN 42	NPT 1 1/4"	22	22
KTN 48	NPT 1 1/2"	22	24

Part No.	Ø	L	SW
KTN 10-C	NPT 1/8"	8	5
KTN 13-C	NPT 1/4"	10	6
KTN 17-C	NPT 3/8"	10	8
KTN 21-C	NPT 1/2"	12	10
KTN 26-C	NPT 3/4"	17	12
KTN 33-C	NPT 1"	19	17
KTN 42-C	NPT 1 1/4"	22	22
KTN 48-C	NPT 1 1/2"	22	24

Part No.	Ø	L	SW
KTN 10-S3	NPT 1/8"	8	5
KTN 13-S3	NPT 1/4"	10	6
KTN 17-S3	NPT 3/8"	10	8
KTN 21-S3	NPT 1/2"	12	10
KTN 26-S3	NPT 3/4"	17	12
KTN 33-S3	NPT 1"	19	17
KTN 42-S3	NPT 1 1/4"	22	22
KTN 48-S3	NPT 1 1/2"	22	24

METRIC PRESSURE PLUGS VERSCHLUSSSTOPFEN MIT GEWINDE

Part No.	Ø	L	SW
KTM 10	M 10 x 1	8	5
KTM 12	M 12 x 1.5	8	6
KTM 14	M 14 x 1.5	10	7
KTM 16	M 16 x 1.5	10	8
KTM 18	M 18 x 1.5	10	8
KTM 20	M 20 x 1.5	10	10
KTM 22	M 22 x 1.5	10	10
KTM 24	M 24 x 1.5	12	12

Part No.	Ø	L	SW
KTM 10-C	M 10 x 1	8	5
KTM 12-C	M 12 x 1.5	8	6
KTM 14-C	M 14 x 1.5	10	6
KTM 16-C	M 16 x 1.5	10	8
KTM 18-C	M 18 x 1.5	10	8
KTM 20-C	M 20 x 1.5	10	10
KTM 22-C	M 22 x 1.5	10	10
KTM 24-C	M 24 x 1.5	12	12

Part No.	Ø	L	SW
KTM 10-S3	M 10 x 1	8	5
KTM 12-S3	M 12 x 1.5	8	6
KTM 14-S3	M 14 x 1.5	10	7
KTM 16-S3	M 16 x 1.5	10	8
KTM 18-S3	M 18 x 1.5	10	8
KTM 20-S3	M 20 x 1.5	10	10
KTM 22-S3	M 22 x 1.5	10	10
KTM 24-S3	M 24 x 1.5	12	12

PRESSURE PLUGS

Brass - 1/16" Cylindrical thread



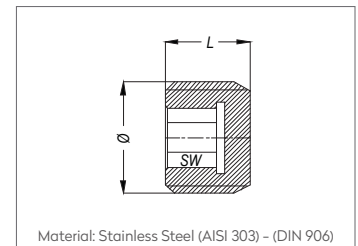
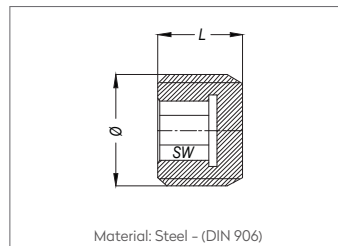
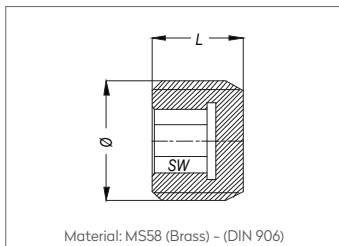
Steel - 1/16" Cylindrical thread



Stainless Steel-1/16" Cylindrical thread



BSP PRESSURE PLUGS VERSCHLUSSSTOPFEN MIT BSP



Part No.	Ø	L	SW
KTR 10D	BSP 1/8"	8	5
KTR 13D	BSP 1/4"	10	7
KTR 17D	BSP 3/8"	10	8
KTR 21D	BSP 1/2"	10	10
KTR 26D	BSP 3/4"	12	12
KTR 33D	BSP 1"	15	14

Part No.	Ø	L	SW
KTR 10D-C	BSP 1/8"	8	5
KTR 13D-C	BSP 1/4"	10	7
KTR 17D-C	BSP 3/8"	10	8
KTR 21D-C	BSP 1/2"	10	10
KTR 26D-C	BSP 3/4"	12	12
KTR 33D-C	BSP 1"	15	14

Part No.	Ø	L	SW
KTR 10D-S3	BSP 1/8"	8	5
KTR 13D-S3	BSP 1/4"	10	7
KTR 17D-S3	BSP 3/8"	10	8
KTR 21D-S3	BSP 1/2"	10	10
KTR 26D-S3	BSP 3/4"	12	12
KTR 33D-S3	BSP 1"	15	14

METRIC PRESSURE PLUGS VERSCHLUSSSTOPFEN MIT GEWINDE

Part No.	Ø	L	SW
KTM 10D	M 10 x 1	8	5
KTM 12D	M 12 x 1.5	8	6
KTM 14D	M 14 x 1.5	10	7
KTM 16D	M 16 x 1.5	10	8
KTM 18D	M 18 x 1.5	10	8
KTM 20D	M 20 x 1.5	10	10
KTM 22D	M 22 x 1.5	10	10
KTM 24D	M 24 x 1.5	12	12

Part No.	Ø	L	SW
KTM 10D-C	M 10 x 1	8	5
KTM 12D-C	M 12 x 1.5	8	6
KTM 14D-C	M 14 x 1.5	10	7
KTM 16D-C	M 16 x 1.5	10	8
KTM 18D-C	M 18 x 1.5	10	8
KTM 20D-C	M 20 x 1.5	10	10
KTM 22D-C	M 22 x 1.5	10	10
KTM 24D-C	M 24 x 1.5	12	12

Part No.	Ø	L	SW
KTM 10D-S3	M 10 x 1	8	5
KTM 12D-S3	M 12 x 1.5	8	6
KTM 14D-S3	M 14 x 1.5	10	7
KTM 16D-S3	M 16 x 1.5	10	8
KTM 18D-S3	M 18 x 1.5	10	8
KTM 20D-S3	M 20 x 1.5	10	10
KTM 22D-S3	M 22 x 1.5	10	10
KTM 24D-S3	M 24 x 1.5	12	12