

SERIE 104 ■

HYDRAULIC COUPLINGS  
HYDRAULIK KUPPLUNGEN



**AUTOMATIC FLUSH FACED NON SPILL MULTI-COUPLINGS**  
**FLACHDICHDENDE AUTOKUPPLUNG IN LECKSGEFREIER AUSFÜHRUNG**



• Standard Serie **104.04 to 104.75**

• MP Serie **104.04 to 104.25**



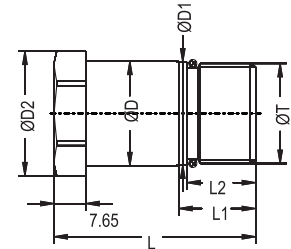
HYDRAULIC COUPLINGS  
HYDRAULIK KUPPLUNGEN

■ SERIE 104MP



Automatic Multi Couplings 104 with leakage free.  
Coupling for multiple connection direct assembling systems.  
Autokupplungen in leckagefreier Ausführung  
Nippel für Multikupplung Direkteinbau

Male Threaded Direct  
Assembling Sockets  
Kupplung (für Direckteinbau)  
mit Aussengewinde



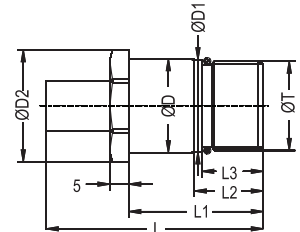
Coupling / Kupplung

104 MP Serie Direct Assembling Sockets  
Kupplung für Direkteinbau

Body Size Nennweite	Connection Anschluß ØT	Order No - Bestellnr.		ØD	ØD1	ØD2	L	L1	L2	SW
		Standard Serie	High Pressure Serie Hochdruck Serie							
04	M20x1.5	104.04 EGBM 20MP	104.04 EGBM 20MP H4	20.9	20.45	25	47	14	11.7	22
06	M24x1.5	104.06 EGBM 24MP	104.06 EGBM 24MP H4	24.9	24.5	29	47	14	11.7	26
08	M27x1.5	104.08 EGBM 27MP	104.08 EGBM 27MP H4	27.9	27.43	32.5	49	16	13.5	29
12	M36x1.5	104.12 EGBM 36MP	104.12 EGBM 36MP H4	36.95	36.5	42	57	24	21.5	38
15	M42x1.5	104.15 EGBM 42MP	104.15 EGBM 42MP H4	42.95	42.5	47	68	25	22.5	44
20	M52x2.0	104.20 EGBM 52MP	104.20 EGBM 52MP H4	53.95	53	62	74.5	28.5	25.5	55
26	M64x2.0	104.25 EGBM 64MP	104.25 EGBM 64MP H4	65.95	65	75	96.5	36	32	65

Plug / Nippel

Male Threaded Direct  
Assembling Plugs  
Nippel (für Direkteinbau)  
mit Aussengewinde



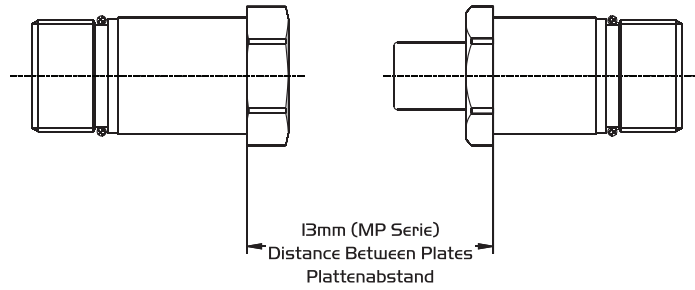
104 MP Serie Direct Assembling Plugs  
Nippel für Direkteinbau

Body Size Nennweite	Connection Anschluß ØT	Order No - Bestellnr.		ØD	ØD1	ØD2	L	L1	L2	L3	SW
		Standart Serie	High Pressure Serie Hochdruck Serie								
04	M20x1.5	104.04 EUBM 20MP	104.04 EUBM 20MP H4	20.9	20.5	25	53.5	35	14	11.5	22
06	M24x1.5	104.06 EUBM 24MP	104.06 EUBM 24MP H4	24.9	24.5	29	55	35	14	11.5	26
08	M27x1.5	104.08 EUBM 27MP	104.08 EUBM 27MP H4	27.9	27.43	33	59	37	16	13.5	30
12	M36x1.5	104.12 EUBM 36MP	104.12 EUBM 36MP H4	36.95	36.5	42	72	45	24	21.5	38
15	M42x1.5	104.15 EUBM 42MP	104.15 EUBM 42MP H4	42.95	42.5	47	87	56	25	22.5	44
20	M52x2.0	104.20 EUBM 52MP	104.20 EUBM 52MP H4	53.95	53	62	95.7	62.5	28.5	25.5	55
26	M64x2.0	104.25 EUBM 64MP	104.25 EUBM 64MP H4	65.95	65	74.7	126.7	84.5	36	32	65



SERIE **104MP**

**HYDRAULIC COUPLINGS**  
HYDRAULIK KUPPLUNGEN

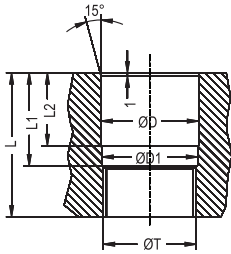


Automatic Multi Couplings 104 with leakage free. Plugs for multiple connection direct assembling systems. Autokupplungen in leckagefreier Ausführung Nippel für Multikupplung Direkteinbau



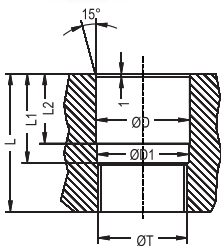
**104 MP Serie Direct Assembling Sockets (Montage dimension)**  
**Kupplung für Direkteinbau mit Aussengewinde (Einbaumaße)**

Body Size Nennweite	Connection Anschluß ØT	Order No - Bestellnr.		ØD G8	ØDI F8	L +0.1	LI +0.1	L2 +0.1
		Standart Serie	High Pressure Serie Hochdruck Serie					
04	M20x1.5	104.04 EGBM 20MP	104.04 EGBM 20MP H4	21.1	20.5	42	33	25.8
06	M24x1.5	104.06 EGBM 24MP	104.06 EGBM 24MP H4	25.1	24.5	42	33	25.8
08	M27x1.5	104.08 EGBM 27MP	104.08 EGBM 27MP H4	28.1	27.5	44.5	33	26.8
12	M36x1.5	104.12 EGBM 36MP	104.12 EGBM 36MP H4	37.1	36.5	52.5	33	26.8
15	M42x1.5	104.15 EGBM 42MP	104.15 EGBM 42MP H4	43.1	42.5	63.5	43	35.8
20	M52x2.0	104.20 EGBM 52MP	104.20 EGBM 52MP H4	54.1	53	70	46	39.1
26	M64x2.0	104.25 EGBM 64MP	104.25 EGBM 64MP H4	66.1	65	92	64	54.3



**104 MP Serie Direct Assembling Plugs (Montage dimension)**  
**Nippel für Direkteinbau mit Aussengewinde (Einbaumaße)**

Body Size Nennweite	Connection Anschluß ØT	Order No - Bestellnr.		ØD G8	ØDI F8	L +0.1	LI +0.1	L2 +0.1
		Standart Serie	High Pressure Serie Hochdruck Serie					
04	M20x1.5	104.04 EUBM 20MP	104.04 EUBM 20MP H4	21.1	20.5	38	28	21.5
06	M24x1.5	104.06 EUBM 24MP	104.06 EUBM 24MP H4	25.1	24.5	38	28	21.5
08	M27x1.5	104.08 EUBM 27MP	104.08 EUBM 27MP H4	28.1	27.5	40	28	21.5
12	M36x1.5	104.12 EUBM 36MP	104.12 EUBM 36MP H4	37.1	36.5	48	28	21.5
15	M42x1.5	104.15 EUBM 42MP	104.15 EUBM 42MP H4	43.1	42.5	59	38	31.5
20	M52x2.0	104.20 EUBM 52MP	104.20 EUBM 52MP H4	54.1	53	67	42	35
26	M64x2.0	104.25 EUBM 64MP	104.25 EUBM 64MP H4	66.1	65	88	60	50



HYDRAULIC COUPLINGS  
HYDRAULIK KUPPLUNGEN

■ SERIE 104.04



Coupling & Plug - Kupplung & Nippel

Nominal Ø(mm) - Nennweite Ø(mm)

Cross Section (mm<sup>2</sup>) - Querschnitt (mm<sup>2</sup>)

Max. Working Pressure - Max. Betriebsdruck  
0-Ring (180°)

Material - Werkstoffe

Shut-off Type - Absperrbarkeit

Standard Serie

4

12.5

160 Bar FPM (Viton)

Stainless Steel - Edelstahl

H4 Serie

4

12.5

500 Bar FPM (Viton)

%17 Chromsteel  
%17 Chromstahl

Double Shut-off - Beidseitig absperrend

Automatic Multi Couplings  
104 with leakage free.

Application Area:

Hydraulic Liquids, Water, Oil and Diesel  
For Example : Control Panels, Machinery for  
production etc.

Use Area:

Automotive Industry, Air Industry  
Machinery, Steel Industry, Plastic and  
Rubber Industry.

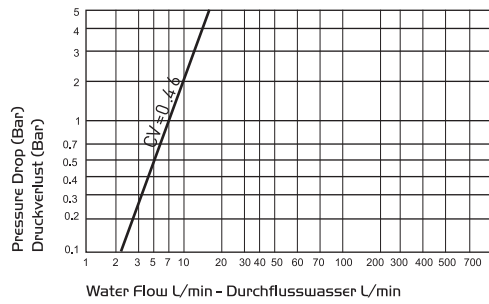
Automatische Multikupplungen 104 in  
leckagefreier Ausführung.

Anwendungsbereiche:

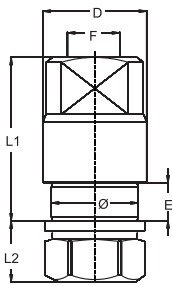
\* Hydraulische Flüssigkeiten  
\* Wasser, Schmieröl, Benzin, Diesel...  
z.B. an Prüfständen, Produktionsmaschinen etc.

Einsatzgebiete:

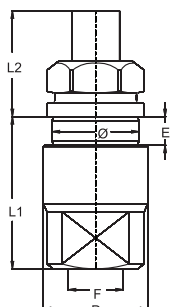
\* Automobilbau, Luftfahrtindustrie  
\* Eisen- und Stahlindustrie, Maschinenbau  
\* Kunststoffindustrie und Aluminiumdruckguß



Coupling  
Kupplung



Body Size Nennweite	Connection Anschluß F	Order No - Bestellnr.	L1 (mm)		L2 (mm)		D (mm)	Ø (mm)	E (mm)	
			Standart Serie	MP Serie	Standart Serie	MP Serie			Standart Serie	MP Serie
04	BSP 1/4"	104.04 DGB 13	45	57.3	20	7.7	25	20.9	14	14
04	BSP 1/4"	104.04 DGB 13 H4	45	57.3	20	7.7	25	20.9	14	14
04	BSPT1/4"	104.04 QGB 13	45	57.3	20	7.7	25	20.9	14	14
04	BSPT1/4"	104.04 QGB 13 H4	45	57.3	20	7.7	25	20.9	14	14
04	NPT 1/4"	104.04 NGB 13	45	57.3	20	7.7	25	20.9	14	14
04	NPT 1/4"	104.04 NGB 13H4	45	57.3	20	7.7	25	20.9	14	14
04	UNF 7/16-20	104.04 UGB 11	45	57.3	20	7.7	25	20.9	14	14
04	UNF 7/16-20	104.04 UGB 11 H4	45	57.3	20	7.7	25	20.9	14	14



04	BSP 1/4"	104.04 DUB 13	41	53	30.5	18.5	25	20.9	10	14
04	BSP 1/4"	104.04 DUB 13 H4	41	53	30.5	18.5	25	20.9	10	14
04	BSPT1/4"	104.04 QUB 13	41	53	30.5	18.5	25	20.9	10	14
04	BSPT1/4"	104.04 QUB 13 H4	41	53	30.5	18.5	25	20.9	10	14
04	NPT 1/4"	104.04 NUB 13	41	53	30.5	18.5	25	20.9	10	14
04	NPT 1/4"	104.04 NUB 13 H4	41	53	30.5	18.5	25	20.9	10	14
04	UNF 7/16-20	104.04 UUB 11	41	53	30.5	18.5	25	20.9	10	14
04	UNF 7/16-20	104.04 UUB 11 H4	41	53	30.5	18.5	25	20.9	10	14





SERIE **104.06** ■

**HYDRAULIC COUPLINGS**  
HYDRAULIK KUPPLUNGEN



**Automatic Multi Couplings**  
104 with leakage free.

**Application Area:**  
Hydraulik Liquids, Water, Oil and Diesel  
For Example : Control Panels, Machinery for production etc.

**Use Area:**  
Automotive Industry, Air Industry  
Machinery, Steel Industry, Plastic and Rubber Industry.

**Automatische Multikupplungen 104 in**  
leckagefreier Ausführung.

**Anwendungsbereiche:**  
\* Hydraulische Flüssigkeiten  
\* Wasser, Schmieröl, Benzin, Diesel...  
z.B. an Prüfständen, Produktionsmaschinen etc.

**Einsatzgebiete:**  
\* Automobilbau, Luftfahrtindustrie  
\* Eisen- und Stahlindustrie, Maschinenbau  
\* Kunststoffindustrie und Aluminiumdruckguß

**Coupling & Plug - Kuplung & Nippel**

Nominal Ø(mm) - Nennweite Ø(mm)  
Cross Section (mm<sup>2</sup>) - Querschnitt (mm<sup>2</sup>)  
Max. Working Pressure - Max. Betriebsdruck  
O-Ring (180°)  
Material - Werkstoffe  
Shut-off Type - Absperrbarkeit

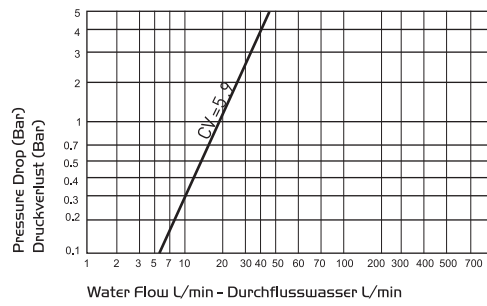
**Standard Serie**

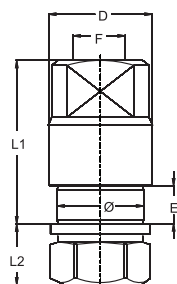
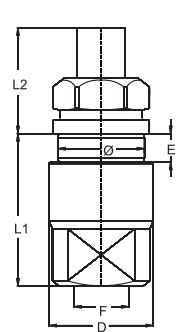
6  
28  
160 Bar FPM (Viton)  
Stainless Steel - Edelstahl

**H4 Serie**

6  
28  
500 Bar FPM (Viton)  
%17 Chromsteel  
%17 Chromstahl

**Double Shut-off - Beidseitig absperrend**



Coupling Kuplung	Body Size Nennweite	Connection Anschluß F	Order No - Bestellnr.	L1 (mm)		L2 (mm)		D (mm)	Ø (mm)	E (mm)		
				Standart Serie	MP Serie	Standart Serie	MP Serie			Standart Serie	MP Serie	
	06	BSP 3/8"	104.06 DGB 17	46.5	58.8	20	7.7	29	24.9	14	14	
	06	BSP 3/8"	104.06 DGB 17 H4	46.5	58.8	20	7.7	29	24.9	14	14	
	06	BSPT3/8"	104.06 QGB 17	46.5	58.8	20	7.7	29	24.9	14	14	
	06	BSPT3/8"	104.06 QGB 17 H4	46.5	58.8	20	7.7	29	24.9	14	14	
	06	NPT 3/8"	104.06 NGB 17	46.5	58.8	20	7.7	29	24.9	14	14	
	06	NPT 3/8"	104.06 NGB 17 H4	46.5	58.8	20	7.7	29	24.9	14	14	
	06	UNF 1/2-20	104.06 UGB 13	46.5	58.8	20	7.7	29	24.9	14	14	
	06	UNF 1/2-20	104.06 UGB 13 H4	46.5	58.8	20	7.7	29	24.9	14	14	
		06	BSP 3/8"	104.06 DUB 17	42.5	54.5	32	20	29	24.9	10	14
		06	BSP 3/8"	104.06 DUB 17 H4	42.5	54.5	32	20	29	24.9	10	14
		06	BSPT3/8"	104.06 QUB 17	42.5	54.5	32	20	29	24.9	10	14
		06	BSPT3/8"	104.06 QUB 17 H4	42.5	54.5	32	20	29	24.9	10	14
06		NPT 3/8"	104.06 NUB 17	42.5	54.5	32	20	29	24.9	10	14	
06		NPT 3/8"	104.06 NUB 17 H4	42.5	54.5	32	20	29	24.9	10	14	
06		UNF 1/2-20	104.06 UUB 13	42.5	54.5	32	20	29	24.9	10	14	
06		UNF 1/2-20	104.06 UUB 13 H4	42.5	54.5	32	20	29	24.9	10	14	

HYDRAULIC COUPLINGS  
HYDRAULIK KUPPLUNGEN

■ SERIE 104.08



Coupling & Plug - Kupplung & Nippel

Nominal Ø(mm) - Nennweite Ø(mm)

Cross Section (mm<sup>2</sup>) - Querschnitt (mm<sup>2</sup>)

Max. Working Pressure - Max. Betriebsdruck  
O-Ring (180°)

Material - Werkstoffe

Shut-off Type - Absperrbarkeit

Standard Serie

8

50

160 Bar FPM (Viton)

Stainless Steel - Edelstahl

H4 Serie

8

50

500 Bar FPM (Viton)

%17 Chromsteel  
%17 Chromstahl

Double Shut-off - Beidseitig absperrend

Automatic Multi Couplings  
104 with leakage free.

Application Area:

Hydraulic Liquids, Water, Oil and Diesel  
For Example : Control Panels, Machinery for  
production etc.

Use Area:

Automotive Industry, Air Industry  
Machinery, Steel Industry, Plastic and  
Rubber Industry.

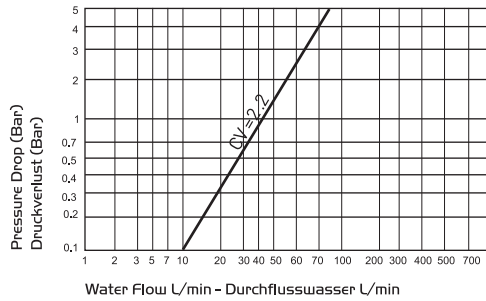
Automatische Multikupplungen 104 in  
leckagefreier Ausführung.

Anwendungsbereiche:

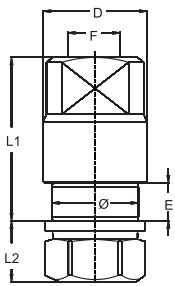
\* Hydraulische Flüssigkeiten  
\* Wasser, Schmieröl, Benzin, Diesel...  
z.B. an Prüfständen, Produktionsmaschinen etc.

Einsatzgebiete:

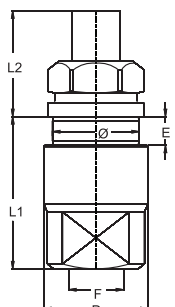
\* Automobilbau, Luftfahrtindustrie  
\* Eisen-und Stahlindustrie, Maschinenbau  
\* Kunststoffindustrie und Aluminiumdruckguß



Coupling  
Kupplung



Body Size Nennweite	Connection Anschluß F	Order No - Bestellnr.	L1 (mm)		L2 (mm)		D (mm)	Ø (mm)	E (mm)	
			Standart Serie	MP Serie	Standart Serie	MP Serie			Standart Serie	MP Serie
08	BSP 1/2"	104.08 DGB 21	52.5	64.8	20	7.7	32.7	28	14	14
08	BSP 1/2"	104.08 DGB 21 H4	52.5	64.8	20	7.7	32.7	28	14	14
08	BSPT1/2"	104.08 QGB 21	52.5	64.8	20	7.7	32.7	28	14	14
08	BSPT1/2"	104.08 QGB 21 H4	52.5	64.8	20	7.7	32.7	28	14	14
08	NPT 1/2"	104.08 NGB 21	52.5	64.8	20	7.7	32.7	28	14	14
08	NPT 1/2"	104.08 NGB 21 H4	52.5	64.8	20	7.7	32.7	28	14	14
08	UNF 9/16-18	104.08 UGB 14	52.5	64.8	20	7.7	32.7	28	14	14
08	UNF 9/16-18	104.08 UGB 14 H4	52.5	64.8	20	7.7	32.7	28	14	14



08	BSP 1/2"	104.08 DUB 21	48.5	60.5	34	22	32.7	28	10	14
08	BSP 1/2"	104.08 DUB 21 H4	48.5	60.5	34	22	32.7	28	10	14
08	BSPT1/2"	104.08 QUB 21	48.5	60.5	34	22	32.7	28	10	14
08	BSPT1/2"	104.08 QUB 21 H4	48.5	60.5	34	22	32.7	28	10	14
08	NPT 1/2"	104.08 NUB 21	48.5	60.5	34	22	32.7	28	10	14
08	NPT 1/2"	104.08 NUB 21 H4	48.5	60.5	34	22	32.7	28	10	14
08	UNF 9/16-18	104.08 UUB 14	48.5	60.5	34	22	32.7	28	10	14
08	UNF 9/16-18	104.08 UUB 14 H4	48.5	60.5	34	22	32.7	28	10	14



SERIE 104.12

HYDRAULIC COUPLINGS  
HYDRAULIK KUPPLUNGEN



**Automatic Multi Couplings  
104 with leakage free.**

**Application Area:**  
Hydraulik Liquids, Water, Oil and Diesel  
For Example : Control Panels, Machinery for  
production etc.

**Use Area:**  
Automotive Industry, Air Industry  
Machinery, Steel Industry, Plastic and  
Rubber Industry.

**Automatische Multikupplungen 104 in  
leckagefreier Ausführung.**

**Anwendungsbereiche:**  
\* Hydraulische Flüssigkeiten  
\* Wasser, Schmieröl, Benzin, Diesel...  
z.B. an Prüfständen, Produktionsmaschinen etc.

**Einsatzgebiete:**  
\* Automobilbau, Luftfahrtindustrie  
\* Eisen- und Stahlindustrie, Maschinenbau  
\* Kunststoffindustrie und Aluminiumdruckguß

**Coupling & Plug - Kupplung & Nippel**

Nominal Ø(mm) - Nennweite Ø(mm)  
Cross Section (mm<sup>2</sup>) - Querschnitt (mm<sup>2</sup>)  
Max. Working Pressure - Max. Betriebsdruck  
O-Ring (180°)  
Material - Werkstoffe  
Shut-off Type - Absperrbarkeit

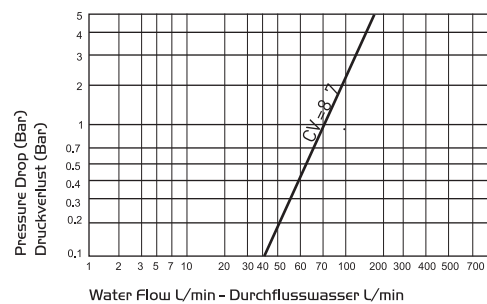
**Standard Serie**

12  
113  
160 Bar FPM (Viton)  
Stainless Steel - Edelstahl

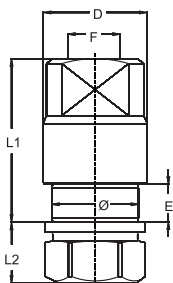
**H4 Serie**

12  
113  
250 Bar FPM (Viton)  
%17 Chromsteel  
%17 Chromstahl

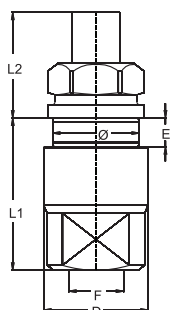
**Double Shut-off - Beidseitig absperrend**



**Coupling  
Kupplung**



Body Size Nennweite	Connection Anschluß F	Order No - Bestellnr.	L1 (mm)		L2 (mm)		D (mm)	Ø (mm)	E (mm)	
			Standart Serie	MP Serie	Standart Serie	MP Serie			Standart Serie	MP Serie
12	BSP 3/4"	104.12 DGB 26	62.6	74.9	20	7.7	44	37	14	14
12	BSP 3/4"	104.12 DGB 26 H4	62.6	74.9	20	7.7	44	37	14	14
12	BSPT3/4"	104.12 QGB 26	62.6	74.9	20	7.7	44	37	14	14
12	BSPT3/4"	104.12 QGB 26 H4	62.6	74.9	20	7.7	44	37	14	14
12	NPT 3/4"	104.12 NGB 26	62.6	74.9	20	7.7	44	37	14	14
12	NPT 3/4"	104.12 NGB 26 H4	62.6	74.9	20	7.7	44	37	14	14
12	UNF 7/8-14	104.12 UGB 22	62.6	74.9	20	7.7	44	37	14	14
12	UNF 7/8-14	104.12 UGB 22 H4	62.6	74.9	20	7.7	44	37	14	14



12	BSP 3/4"	104.12 DUB 26	58.6	70.6	39	27	44	37	10	14
12	BSP 3/4"	104.12 DUB 26 H4	58.6	70.6	39	27	44	37	10	14
12	BSPT3/4"	104.12 QUB 26	58.6	70.6	39	27	44	37	10	14
12	BSPT3/4"	104.12 QUB 26 H4	58.6	70.6	39	27	44	37	10	14
12	NPT 3/4"	104.12 NUB 26	58.6	70.6	39	27	44	37	10	14
12	NPT 3/4"	104.12 NUB 26 H4	58.6	70.6	39	27	44	37	10	14
12	UNF 7/8-14	104.12 UUB 22	58.6	70.6	39	27	44	37	10	14
12	UNF 7/8-14	104.12 UUB 22 H4	58.6	70.6	39	27	44	37	10	14

HYDRAULIC COUPLINGS  
HYDRAULIK KUPPLUNGEN

■ SERIE 104.15



Coupling & Plug - Kupplung & Nippel

Nominal Ø(mm) - Nennweite Ø(mm)

Cross Section (mm<sup>2</sup>) - Querschnitt (mm<sup>2</sup>)

Max. Working Pressure - Max. Betriebsdruck  
O-Ring (180°)

Material - Werkstoffe

Shut-off Type - Absperrbarkeit

Standard Serie

15

176.5

160 Bar FPM (Viton)

Stainless Steel - Edelstahl

H4 Serie

15

176.5

250 Bar FPM (Viton)

%17 Chromsteel  
%17 Chromstahl

Double Shut-off - Beidseitig absperrend

Automatic Multi Couplings  
104 with leakage free.

Application Area:

Hydraulic Liquids, Water, Oil and Diesel  
For Example : Control Panels, Machinery for  
production etc.

Use Area:

Automotive Industry, Air Industry  
Machinery, Steel Industry, Plastic and  
Rubber Industry.

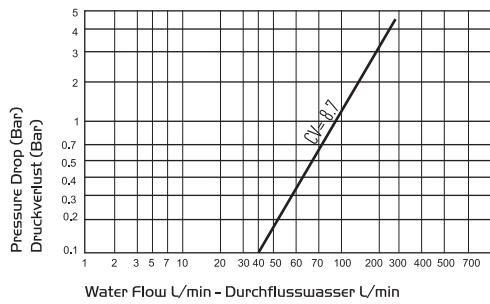
Automatische Multikupplungen 104 in  
leckagefreier Ausführung.

Anwendungsbereiche:

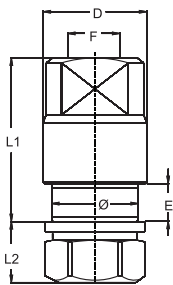
\* Hydraulische Flüssigkeiten  
\* Wasser, Schmieröl, Benzin, Diesel...  
z.B. an Prüfständen, Produktionsmaschinen etc.

Einsatzgebiete:

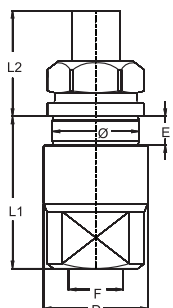
\* Automobilbau, Luftfahrtindustrie  
\* Eisen- und Stahlindustrie, Maschinenbau  
\* Kunststoffindustrie und Aluminiumdruckguß



Coupling  
Kupplung



Body Size Nennweite	Connection Anschluß F	Order No - Bestellnr.	L1 (mm)	L2 (mm)	D (mm)	Ø (mm)	E (mm)
15	BSP 3/4"	104.15 DGB 26	73	20	49	43	14
15	BSP 3/4"	104.15 DGB 26 H4	73	20	49	43	14
15	BSPT3/4"	104.15 QGB 26	73	20	49	43	14
15	BSPT3/4"	104.15 QGB 26 H4	73	20	49	43	14
15	NPT 3/4"	104.15 NGB 26	73	20	49	43	14
15	NPT 3/4"	104.15 NGB 26 H4	73	20	49	43	14
15	UNF 1"1/16-12	104.15 UGB 27	73	20	49	43	14
15	UNF 1"1/16-12	104.15 UGB 27 H4	73	20	49	43	14



15	BSP 3/4"	104.15 DUB 26	69	43	50	43	10
15	BSP 3/4"	104.15 DUB 26 H4	69	43	50	43	10
15	BSPT 3/4"	104.15 QUB 26	69	43	50	43	10
15	BSPT 3/4"	104.15 QUB 26 H4	69	43	50	43	10
15	NPT 3/4"	104.15 NUB 26	69	43	50	43	10
15	NPT 3/4"	104.15 NUB 26 H4	69	43	50	43	10
15	UNF 1"1/16-12	104.15 UUB 27	69	43	50	43	10
15	UNF 1"1/16-12	104.15 UUB 27 H4	69	43	50	43	10



SERIE 104.20

HYDRAULIC COUPLINGS  
HYDRAULIK KUPPLUNGEN



**Automatic Multi Couplings  
104 with leakage free.**

**Application Area:**  
Hydraulik Liquids, Water, Oil and Diesel  
For Example : Control Panels, Machinery for  
production etc.

**Use Area:**  
Automotive Industry, Air Industry  
Machinery, Steel Industry, Plastic and  
Rubber Industry.

**Automatische Multikupplungen 104 in  
leckagefreier Ausführung.**

**Anwendungsbereiche:**  
\* Hydraulische Flüssigkeiten  
\* Wasser, Schmieröl, Benzin, Diesel...  
z.B. an Prüfständen, Produktionsmaschinen etc.

**Einsatzgebiete:**  
\* Automobilbau, Luftfahrtindustrie  
\* Eisen- und Stahlindustrie, Maschinenbau  
\* Kunststoffindustrie und Aluminiumdruckguß

**Coupling & Plug - Kupplung & Nippel**

Nominal Ø(mm) - Nennweite Ø(mm)  
Cross Section (mm<sup>2</sup>) - Querschnitt (mm<sup>2</sup>)  
Max. Working Pressure - Max. Betriebsdruck  
O-Ring (180°)  
Material - Werkstoffe  
Shut-off Type - Absperrbarkeit

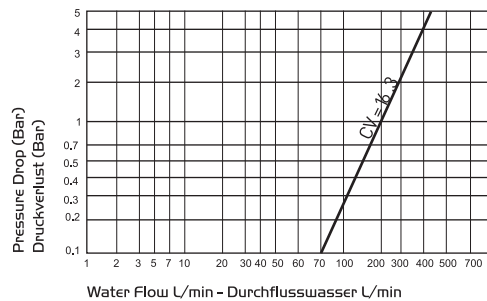
**Standard Serie**

20  
314  
160 Bar FPM (Viton)  
Stainless Steel - Edelstahl

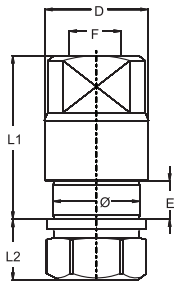
**H4 Serie**

20  
314  
250 Bar FPM (Viton)  
%17 Chromsteel  
%17 Chromstahl

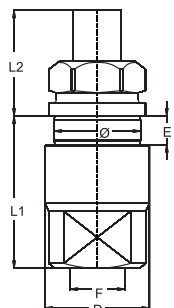
**Double Shut-off - Beidseitig absperrend**



**Coupling  
Kupplung**



Body Size Nennweite	Connection Anschluß F	Order No - Bestellnr.	L1 (mm)	L2 (mm)	D (mm)	Ø (mm)	E (mm)
20	BSP 1"	104.20 DGB 33	86	20	62	54	14
20	BSP 1"	104.20 DGB 33 H4	86	20	62	54	14
20	BSPT1"	104.20 QGB 33	86	20	62	54	14
20	BSPT1"	104.20 QGB 33 H4	86	20	62	54	14
20	NPT 1"	104.20 NGB 33	86	20	62	54	14
20	NPT 1"	104.20 NGB 33 H4	86	20	62	54	14
20	UNF 1"5/16-12	104.20 UGB 33	86	20	62	54	14
20	UNF 1"5/16-12	104.20 UGB 33 H4	86	20	62	54	14



20	BSP 1"	104.20 DUB 26	84.1	45	62	54	10
20	BSP 1"	104.20 DUB 26 H4	84.1	45	62	54	10
20	BSPT1"	104.20 QUB 26	84.1	45	62	54	10
20	BSPT1"	104.20 QUB 26 H4	84.1	45	62	54	10
20	NPT 1"	104.22 NUB 26	84.1	45	62	54	10
20	UNF 1"5/16-12	104.20 UUB 33	84.1	45	62	54	10
20	UNF 1"5/16-12	104.20 UUB 33 H4	84.1	45	62	54	10



HYDRAULIC COUPLINGS  
HYDRAULIK KUPPLUNGEN

■ SERIE 104.25



Coupling & Plug - Kupplung & Nippel

Nominal Ø(mm) - Nennweite Ø(mm)

Cross Section (mm<sup>2</sup>) - Querschnitt (mm<sup>2</sup>)

Max. Working Pressure - Max. Betriebsdruck  
O-Ring (180°)

Material - Werkstoffe

Shut-off Type - Absperrbarkeit

Standard Serie

25

490.5

160 Bar FPM (Viton)

Stainless Steel - Edelstahl

H4 Serie

25

490.5

250 Bar FPM (Viton)

%17 Chromsteel  
%17 Chromstahl

Double Shut-off - Beidseitig absperrend

Automatic Multi Couplings  
104 with leakage free.

Application Area:

Hydraulic Liquids, Water, Oil and Diesel  
For Example : Control Panels, Machinery for  
production etc.

Use Area:

Automotive Industry, Air Industry  
Machinery, Steel Industry, Plastic and  
Rubber Industry.

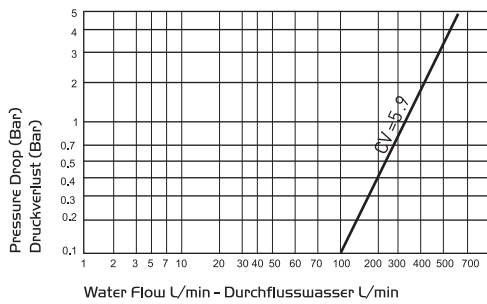
Automatische Multikupplungen 104 in  
leckagefreier Ausführung.

Anwendungsbereiche:

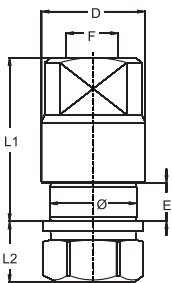
\* Hydraulische Flüssigkeiten  
\* Wasser, Schmieröl, Benzin, Diesel...  
z.B. an Prüfständen, Produktionsmaschinen etc.

Einsatzgebiete:

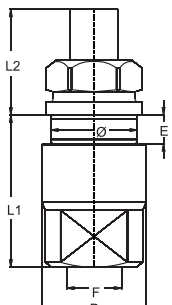
\* Automobilbau, Luftfahrtindustrie  
\* Eisen- und Stahlindustrie, Maschinenbau  
\* Kunststoffindustrie und Aluminiumdruckguß



Coupling  
Kupplung



Body Size Nennweite	Connection Anschluß F	Order No - Bestellnr.	L1 (mm)	L2 (mm)	D (mm)	Ø (mm)	E (mm)
25	BSP 1"1/4"	104.25 DGB 42	108	20	74	66	14
25	BSP 1"1/4"	104.25 DGB 42 H4	108	20	74	66	14
25	BSPT1"1/4"	104.25 QGB 42	108	20	74	66	14
25	BSPT1"1/4"	104.25 QGB 42 H4	108	20	74	66	14
25	NPT 1"1/4"	104.25 NGB 42	108	20	74	66	14
25	NPT 1"1/4"	104.25 NGB 42 H4	108	20	74	66	14
25	UNF 1"5/8-12	104.25 UGB 41	108	20	74	66	14
25	UNF 1"5/8-12	104.25 UGB 41 H4	108	20	74	66	14



25	BSP 1"1/4"	104.25 DUB 42	104	54	74	66	10
25	BSP 1"1/4"	104.25 DUB 42 H4	104	54	74	66	10
25	BSPT1"1/4"	104.25 QUB 42	104	54	74	66	10
25	BSPT1"1/4"	104.25 QUB 42 H4	104	54	74	66	10
25	NPT 1"1/4"	104.25 NUB 42	104	54	74	66	10
25	NPT 1"1/4"	104.25 NUB 42 H4	104	54	74	66	10
25	UNF 1"5/8-12	104.25 UUB 41	104	54	74	66	10
25	UNF 1"5/8-12	104.25 UUB 41 H4	104	54	74	66	10



SERIE 104.37 ■

HYDRAULIC COUPLINGS  
HYDRAULIK KUPPLUNGEN



**Automatic Multi Couplings  
104 with leakage free.**

**Application Area:**

Hydraulic Liquids, Water, Oil and Diesel  
For Example : Control Panels, Machinery for production etc.

**Use Area:**

Automotive Industry, Air Industry  
Machinery, Steel Industry, Plastic and Rubber Industry.

**Automatische Multikupplungen 104 in  
leckagefreier Ausführung.**

**Anwendungsbereiche:**

\* Hydraulische Flüssigkeiten  
\* Wasser, Schmieröl, Benzin, Diesel...  
z.B. an Prüfständen, Produktionsmaschinen etc.

**Einsatzgebiete:**

\* Automobilbau, Luftfahrtindustrie  
\* Eisen- und Stahlindustrie, Maschinenbau  
\* Kunststoffindustrie und Aluminiumdruckguß

**Coupling & Plug - Kupplung & Nippel**

Nominal Ø(mm) - Nennweite Ø(mm)

Cross Section (mm<sup>2</sup>) - Querschnitt (mm<sup>2</sup>)

Max. Working Pressure - Max. Betriebsdruck  
O-Ring (180°)

Material - Werkstoffe | Coupler Body  
Kupplungsgehäuse

Shut-off Type | Plug Body  
Absperrbarkeit | Steckergehäuse

**Standard Serie - Standardausführung**

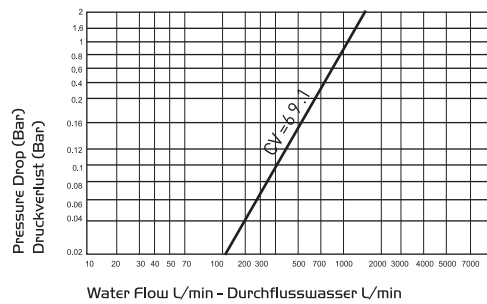
37

1074.5

16 Bar FPM (Viton)

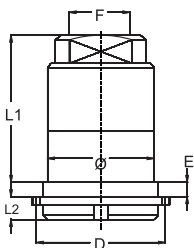
Brass Nickelplated - Messing Vernickelt  
Stainless Steel - Edelstahl

**Double Shut-off - Beidseitig absperrend**

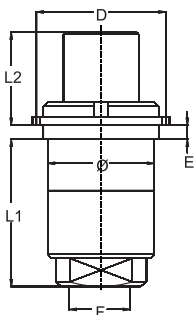


**Coupling  
Kupplung**

Body Size Nennweite	Connection Anschluß F	Order No - Bestellnr.	L1 (mm)	L2 (mm)	D (mm)	Ø (mm)	E (mm)
------------------------	-----------------------------	-----------------------	------------	------------	-----------	-----------	-----------



37	BSP 1"1/2	104.37 DGB 48	151	20	108	95.8	20
37	NPT 1"1/2	104.37 NGB 48	151	20	108	95.8	20



37	BSP 1"1/2	104.37 DUB 48	101.5	72	108	95.8	19.8
37	NPT 1"1/2	104.37 NUB 48	101.5	72	108	95.8	19.8

**HYDRAULIC COUPLINGS**  
HYDRAULIK KUPPLUNGEN

**SERIE 104.50**



**Coupling & Plug - Kupplung & Nippel**

Nominal Ø(mm) - Nennweite Ø(mm)

Cross Section (mm<sup>2</sup>) - Querschnitt (mm<sup>2</sup>)

Max. Working Pressure - Max. Betriebsdruck  
O-Ring (180°)

Material - Werkstoffe | Coupler Body  
Kupplungsgehäuse

Shut-off Type  
Absperbarkeit | Plug Body  
Steckergehäuse

**Standard Serie - Standardausführung**

50

1962.5

16 Bar FPM (Viton)

Brass Nickelplated - Messing Vernickelt  
Stainless Steel - Edelstahl

**Double Shut-off - Beidseitig absperrend**

**Automatic Multi Couplings**  
104 with leakage free.

**Application Area:**

Hydraulic Liquids, Water, Oil and Diesel  
For Example : Control Panels, Machinery for  
production etc.

**Use Area:**

Automotive Industry, Air Industry  
Machinery, Steel Industry, Plastic and  
Rubber Industry.

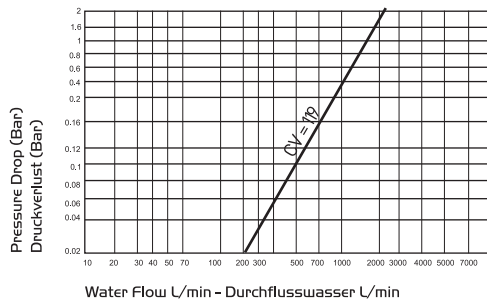
**Automatische Multikupplungen 104 in**  
leckagefreier Ausführung.

**Anwendungsbereiche:**

\* Hydraulische Flüssigkeiten  
\* Wasser, Schmieröl, Benzin, Diesel...  
z.B. an Prüfständen, Produktionsmaschinen etc.

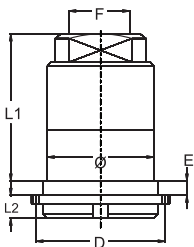
**Einsatzgebiete:**

\* Automobilbau, Luftfahrtindustrie  
\* Eisen-und Stahlindustrie, Maschinenbau  
\* Kunststoffindustrie und Aluminiumdruckguß



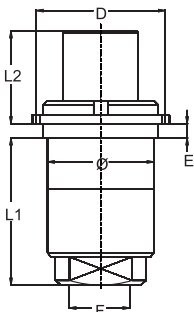
**Coupling**  
Kupplung

Body Size Nennweite	Connection Anschluß F	Order No - Bestellnr.	L1 (mm)	L2 (mm)	D (mm)	Ø (mm)	E (mm)
------------------------	-----------------------------	-----------------------	------------	------------	-----------	-----------	-----------



50	BSP 2"	104.50 DGB 60	162	20	136	124	16
----	--------	---------------	-----	----	-----	-----	----

50	NPT 2"	104.50 NGB 60	162	20	136	124	16
----	--------	---------------	-----	----	-----	-----	----



50	BSP 2"	104.50 DUB 60	162	86	136	122	16
----	--------	---------------	-----	----	-----	-----	----

50	NPT 2"	104.50 NUB 60	162	86	136	122	16
----	--------	---------------	-----	----	-----	-----	----



SERIE 104.75 ■

HYDRAULIC COUPLINGS  
HYDRAULIK KUPPLUNGEN



**Automatic Multi Couplings  
104 with leakage free.**

**Application Area:**  
Hydraulic Liquids, Water, Oil and Diesel  
For Example : Control Panels, Machinery for  
production etc.

**Use Area:**  
Automotive Industry, Air Industry  
Machinery, Steel Industry, Plastic and  
Rubber Industry.

**Automatische Multikupplungen 104 in  
leckagefreier Ausführung.**

**Anwendungsbereiche:**  
\* Hydraulische Flüssigkeiten  
\* Wasser, Schmieröl, Benzin, Diesel...  
z.B. an Prüfständen, Produktionsmaschinen etc.

**Einsatzgebiete:**  
\* Automobilbau, Luftfahrtindustrie  
\* Eisen-und Stahlindustrie, Maschinenbau  
\* Kunststoffindustrie und Aluminiumdruckguß

**Coupling & Plug - Kupplung & Nippel**

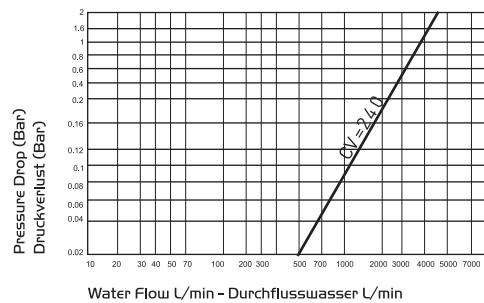
- Nominal Ø(mm) - Nennweite Ø(mm)
- Cross Section (mm<sup>2</sup>) - Querschnitt (mm<sup>2</sup>)
- Max. Working Pressure - Max. Betriebsdruck  
O-Ring (180°)
- Material - Werkstoffe
- Shut-off Type  
Absperrbarkeit

- Coupler Body  
Kupplungsgehäuse
- Plug Body  
Steckergehäuse

**Standard Serie - Standardausführung**

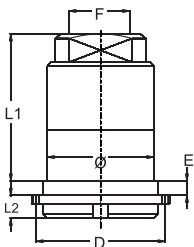
- 75
- 4415.5
- 16 Bar FPM (Viton)
- Brass Nickelplated - Messing Vernickelt  
Stainless Steel - Edelstahl

**Double Shut-off - Beidseitig absperrend**

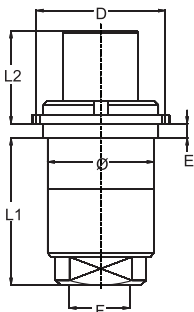


**Coupling  
Kupplung**

Body Size Nennweite	Connection Anschluß F	Order No - Bestellnr.	L1 (mm)	L2 (mm)	D (mm)	Ø (mm)	E (mm)	Weight Gewicht (kg)
------------------------	-----------------------------	-----------------------	------------	------------	-----------	-----------	-----------	---------------------------



75	BSP 3"	104.75 DGB 90	232	20	183	171	16	26.200
75	NPT 3"	104.75 NGB 90	232	20	183	171	16	26.200



75	BSP 3"	104.75 DUB 90	232	117	183	171	16	32
75	NPT 3"	104.75 NUB 90	232	117	183	171	16	32